

Quick PGN Analysis,
Game ID 25592, Event: ?
Site: ?

Date: 2019.10.14

White: Richard Neal

Black: Robert Flanagan

Result: *

Analyzed at October 15, 2019, 2:45 am

www.ChessPractice.com

PGN

[Event "?"]
[Site "?"]
[Date "2019.01.14"]
[White "Richard Neal"]
[Black "Robert Flanagan"]
[Result "*"]

1. Nf3 Nf6 2. c4 c5 3. Nc3 Nc6 4. g3 e6 5. Bg2 d5 6. cxd5 exd5 7. d3 d4 8. Nb1 Be7 9. Nbd2 O-O 10. Nc4 Re8 11. O-O b5 12. Nce5 Bb7 13. Qb3 Nxe5 14. Nxe5 Bxg2 15. Qxf7 Kh8 16. Kxg2 Qd5 17. Qxd5 Nxd5 18. Bd2 Bf6 19. Nf7 Kg8 20. Nd6 Rxe2 21. Rad1 Ne3 22. Bxe3 dxe3 23. Nxb5 Rxb2 24. Nc7 Rc8 25. Nd5 e2 26. Kf3 exf1=Q 27. Rxf1 Rf8 28. Kg4 Rxa2 29. h4 Bd4 30. f4 Rd2 31. h5 Rxd3 32. f5 Bf6 33. Nc7 Be5 34. Ne6 Rxc3 35. Kh4 Rb8 36. h6 Rb4 37. Kh5 Rh3 38. Kg5 Bf6

Game Statistics

Move statistics		
	White	Black
Best Moves	19	29
Very good Moves	4	0
Good Moves	3	2
Weak Moves	2	3
Very Weak Moves	10	4

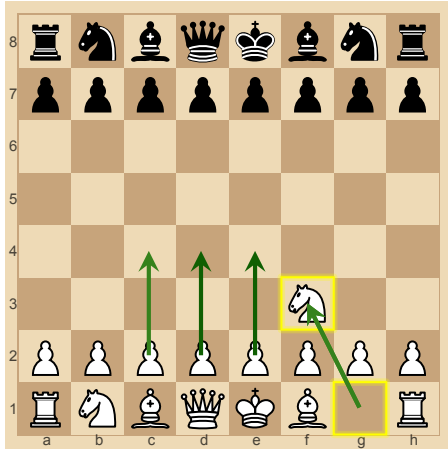
Move Analysis

White's Move	Pawns up	Possible Moves	Black's Move	Pawns up	Possible Moves
1. Nf3	0.22	d4(0.3), e4(0.28), Nf3(0.22), c4(0.19),	1. ...Nf6	-0.19	Nf6(-0.19), d5(-0.22), c5(-0.23), Nc6(-0.37),
2. c4	0.21	c4(0.21), e3(0.2), d4(0.2), Nc3(0.1),	2. ...c5	-0.31	e6(-0.29), c5(-0.31), Nc6(-0.33), d5(-0.38),
3. Nc3	0.2	e3(0.39), Nc3(0.2),	3. ...Nc6	-0.37	e6(-0.12), Nc6(-0.37),
4. g3	0.11	d4(0.26), e4(0.21), g3(0.11), e3(0.08),	4. ...e6	0.09	e5(0.12), d5(0.09), e6(0.09), d6(-0.16),
5. Bg2	0	Bg2(0), e4(-0.08), d4(-0.11), d3(-0.12),	5. ...d5	0.32	d5(0.32), Be7(0.28),

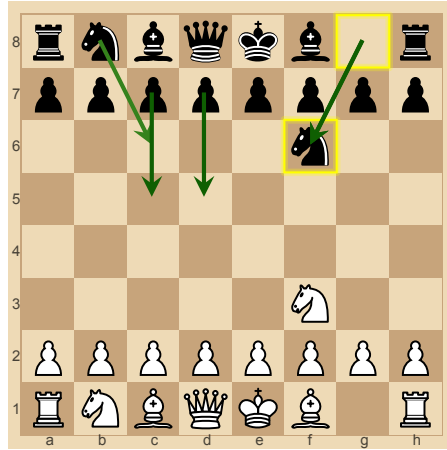
6. cxd5	-0.16	cx d5(-0.16),	6. ...exd5	-0.17	exd5(-0.17), Nxd5(-0.21),
7. d3	-0.51	d4(0.14),	7. ...d4	0.56	d4(0.56),
8. Nb1	-0.68	Ne4(-0.54), Nb1(-0.68),	8. ...Be7	0.73	Be7(0.73), Be6(0.64), h6(0.54), Bd6(0.49),
9. Nbd2	-0.71	Na3(-0.67), O-O(-0.7), Nbd2(-0.71), Bf4(-0.89),	9. ...O-O	0.75	Rb8(0.77), O-O(0.75), Be6(0.68), Nd5(0.67),
10. Nc4	-0.7	Nc4(-0.7), O-O(-0.86), a3(-0.94),	10. ...Re8	0.9	Be6(0.91), Nd5(0.9), Re8(0.9), a6(0.82),
11. O-O	-0.65	O-O(-0.65),	11. ...b5	-0.47	Nd5(0.9), Bf8(0.62),
12. Nce5	0.05	Nfe5(0.19), Nce5(0.05),	12. ...Bb7	-0.87	Nxe5(-0.27),
13. Qb3	-0.71	Nxf7(0.26),	13. ...Nxe5	0.9	Nxe5(0.9), Qd5(0.88),
14. Nxe5	-0.9	Nxe5(-0.9),	14. ...Bxg2	0.74	Bd5(0.78), Bxg2(0.74),
15. Qxf7	-0.79	Qxf7(-0.79), Kxg2(-1),	15. ...Kh8	0.62	Kh8(0.62),
16. Kxg2	0.14	Kxg2(0.14),	16. ...Qd5	-0.42	Bd6(0), Bf8(0),
17. Qxd5	0.35	Qxd5(0.35),	17. ...Nxd5	-0.72	Nxd5(-0.72),
18. Bd2	-0.25	a4(0.91),	18. ...Bf6	0.29	Bf6(0.29),
19. Nf7	-0.56	Nf3(-0.14),	19. ...Kg8	0.46	Kg8(0.46),
20. Nd6	-0.56	Nd6(-0.56),	20. ...Rxe2	0.46	Rxe2(0.46),
21. Rad1	-0.94	Rfd1(-0.47), Ne4(-0.55),	21. ...Ne3	0.95	Ne3(0.95),
22. Bxe3	-0.93	Bxe3(-0.93),	22. ...dxe3	0.91	dxe3(0.91),
23. Nxb5	-1	Nxb5(-1), Rde1(-1.01), Kf3(-1.2), Ne4(-1.2),	23. ...Rxb2	1.46	Rxb2(1.46), Rf8(1.26),
24. Nc7	-2.89	Rb1(-1.22),	24. ...Rc8	3.05	Rc8(3.05),
25. Nd5	-5.71	Rb1(-2.88),	25. ...e2	5.9	e2(5.9),
26. Kf3	-6.62	a4(-5.88), Nxf6(-5.89), Rc1(-5.98), Rde1(-6.02),	26. ...exf1=Q	6.34	Rf8(6.76), exd1=B(6.73), exd1=Q(6.67),
27. Rxf1	-6.41	Nxf6(-6.34), Rxf1(-6.41),	27. ...Rf8	6.31	Kf7(6.32), Rf8(6.31), Rd8(6.3), Rxa2(6.25),
28. Kg4	-6.38	Kg4(-6.38), Nxf6(-6.45), a4(-6.49), Ke4(-6.6),	28. ...Rxa2	6.53	Rxa2(6.53), Rd8(6.47), Bd4(6.41),
29. h4	-6.53	h4(-6.53), f4(-6.61), Rc1(-6.68), h3(-6.69),	29. ...Bd4	6.43	a5(6.68), Rd8(6.49), Rd2(6.43), Bd4(6.43),
30. f4	-6.91	f3(-6.64), Nf4(-6.86), f4(-6.91),	30. ...Rd2	6.95	Rd2(6.95), h5(6.71), Ra3(6.7),
31. h5	-7.2	f5(-6.94), Nc7(-6.98), Rf3(-7.15), h5(-7.2),	31. ...Rxd3	7.02	Kf7(7.35),
32. f5	-7.79	Ne7(-7.1), Rf3(-7.32), Nc7(-7.36),	32. ...Bf6	7.06	Be5(7.75), Rb8(7.73), Rb3(7.6), Ra3(7.59),
33. Nc7	-10.94	Nf4(-7.04),	33. ...Be5	9.64	Be5(9.64),
34. Ne6	-10.13	Ne6(-10.13),	34. ...Rxg3	11.4	Rxg3(11.4),
35. Kh4	-12.18	Kh4(-12.18),	35. ...Rb8	11.97	Rb8(11.97),

36. h6	-49.94	Rf4(-11.77),	36. ...Rb4	15.46	Rbb3(18.95),
37. Kh5	-50	Nd4(-16.66),	37. ...Rh3	50	g6(50), Rh3(50),
38. Kg5	-100	Kg5(-100),	38. ...Bf6	100	gxf6(100), Bf6(100),

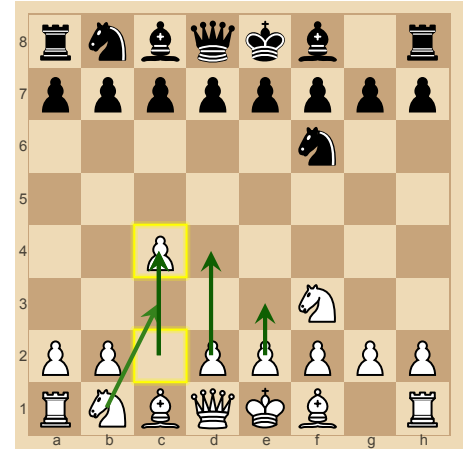
Move Boards



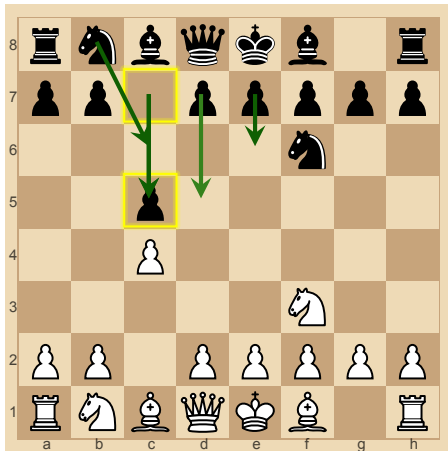
1. Nf3 White is +0.22 pawns.
Best moves: d4: +0.08
 e4: +0.06 **Nf3: 0** c4: -0.03



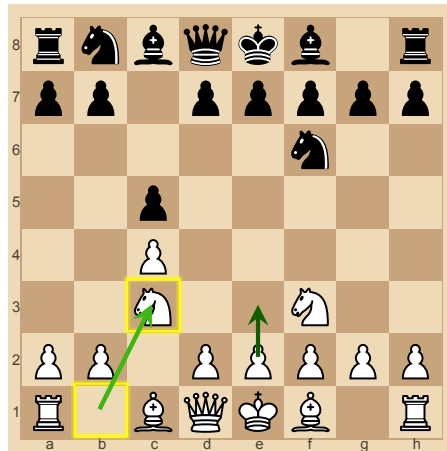
1. ...Nf6 Black is -0.19 pawns.
Best moves: Nf6: 0 d5: -0.03
 c5: -0.04 Nc6: -0.18



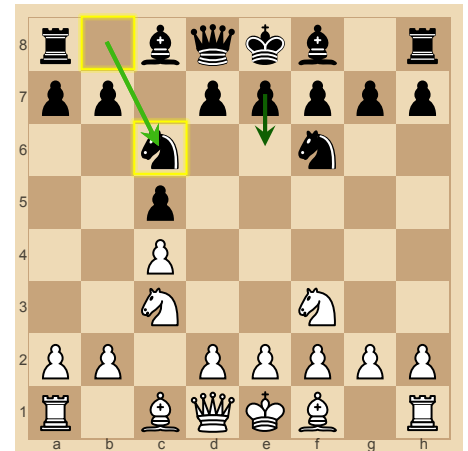
2. c4 White is +0.21 pawns.
Best moves: c4: 0 e3: -0.01
 d4: -0.01 Nc3: -0.11



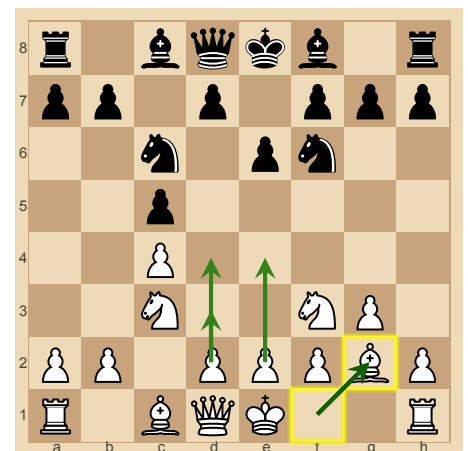
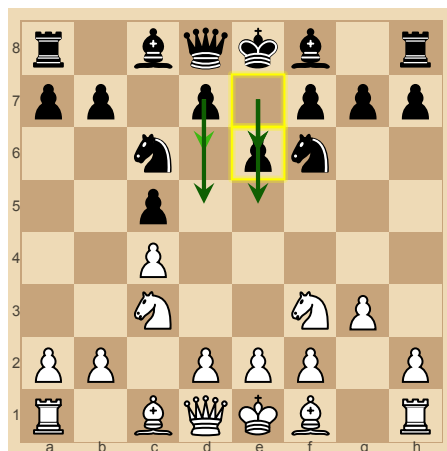
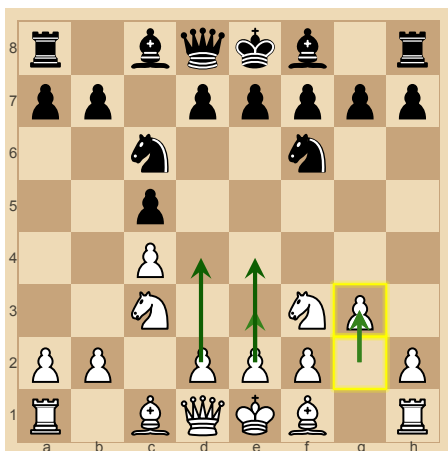
2. ...c5 Black is -0.31 pawns.
Best moves: e6: +0.02 **c5: 0**
 Nc6: -0.02 d5: -0.07



3. Nc3 White is +0.2 pawns.
Best moves: e3: +0.19 **Nc3: 0**



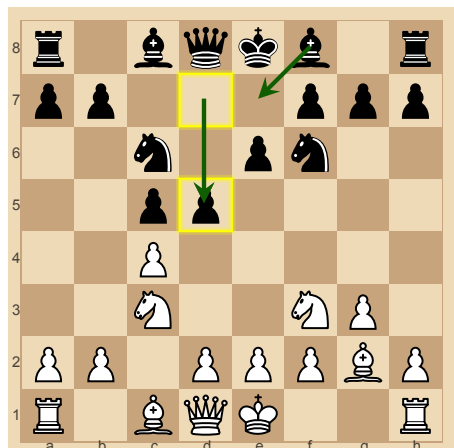
3. ...Nc6 Black is -0.37 pawns.
Best moves: e6: +0.25 **Nc6: 0**



4. g3 White is +0.11 pawns.

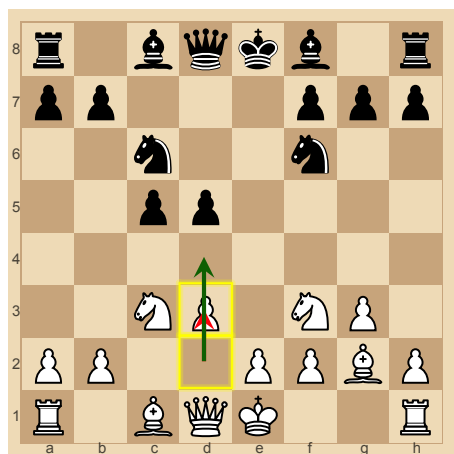
Best moves: d4: +0.15 e4: +0.1

g3: 0 e3: -0.03



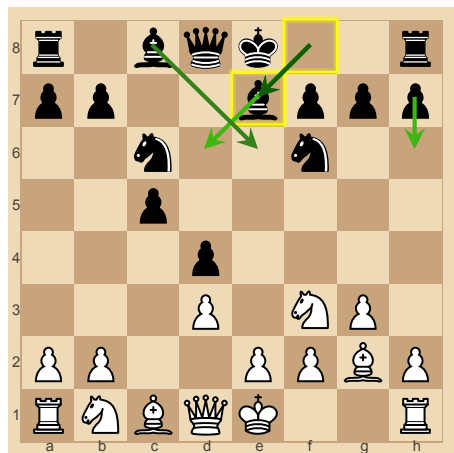
5. ...d5 Black is +0.32 pawns.

Best moves: d5: 0 Be7: -0.04



7. d3 White is -0.51 pawns.

Best moves: d4: +0.65



8. ...Be7 Black is +0.73 pawns.

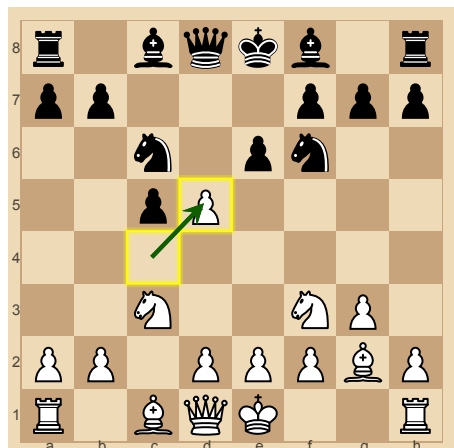
Best moves: Be7: 0 Be6: -0.09

h6: -0.19 Bd6: -0.24

4. ...e6 Black is +0.09 pawns.

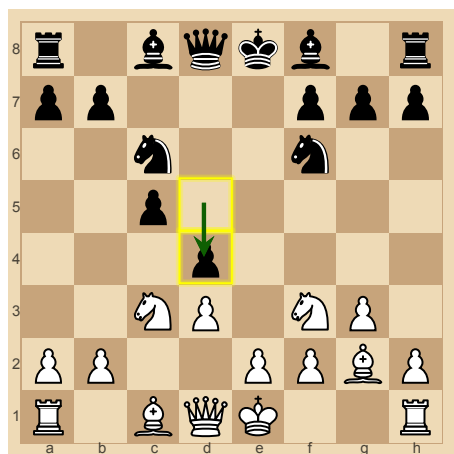
Best moves: e5: +0.03 d5: 0

e6: 0 d6: -0.25



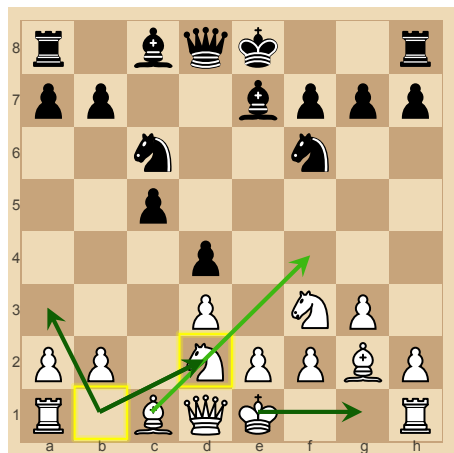
6. cxd5 White is -0.16 pawns.

Best moves: cxd5: 0



7. ...d4 Black is +0.56 pawns.

Best moves: d4: 0



9. Nbd2 White is -0.71 pawns.

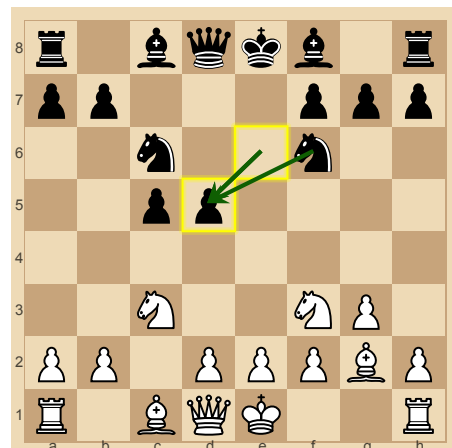
Best moves: Na3: +0.04

O-O: +0.01 **Nbd2: 0** Bf4: -0.18

5. Bg2 Both sides are even.

Best moves: Bg2: 0 e4: -0.08

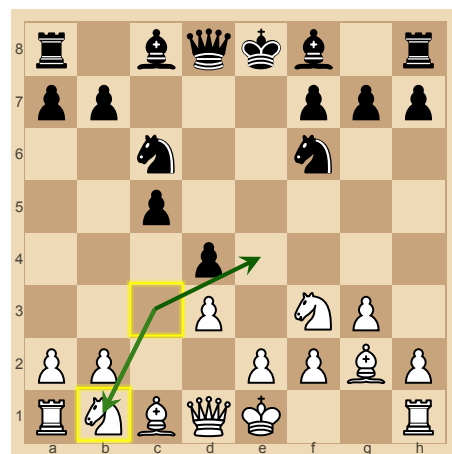
d4: -0.11 d3: -0.12



6. ...exd5 Black is -0.17 pawns.

Best moves: exd5: 0

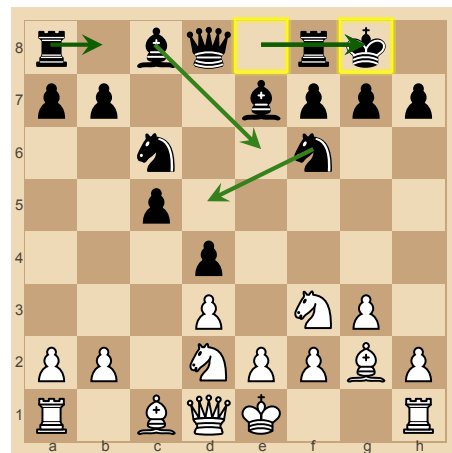
Nxd5: -0.04



8. Nb1 White is -0.68 pawns.

Best moves: Ne4: +0.14

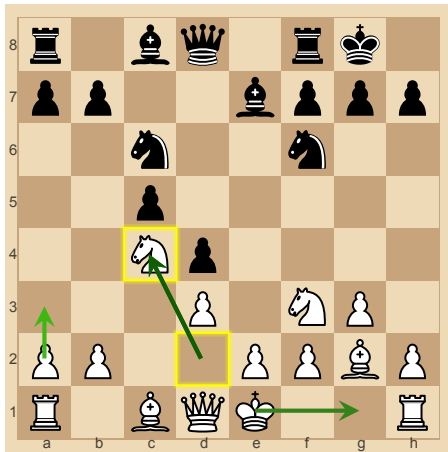
Nb1: 0



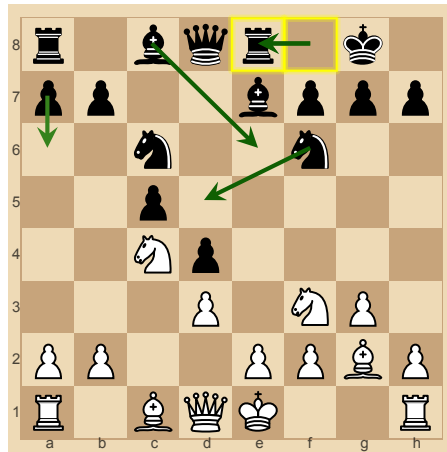
9. ...O-O Black is +0.75 pawns.

Best moves: Rb8: +0.02

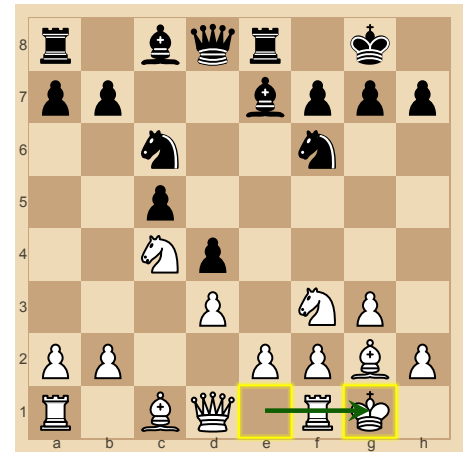
O-O: 0 Be6: -0.07 Nd5: -0.08



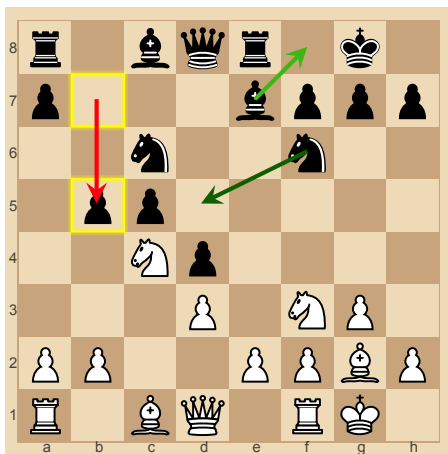
10. Nc4 White is -0.7 pawns.
Best moves: Nc4: 0 O-O: -0.16
 a3: -0.24



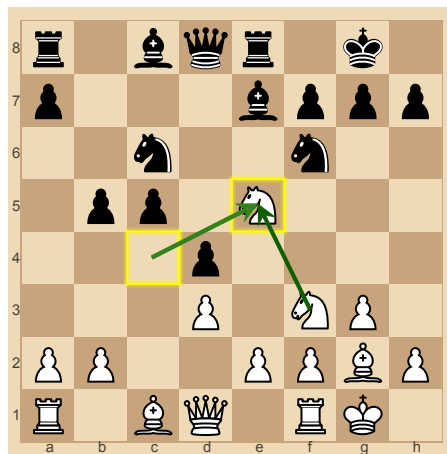
10. ...Re8 Black is +0.9 pawns.
Best moves: Be6: +0.01 Nd5: 0
 Re8: 0 a6: -0.08



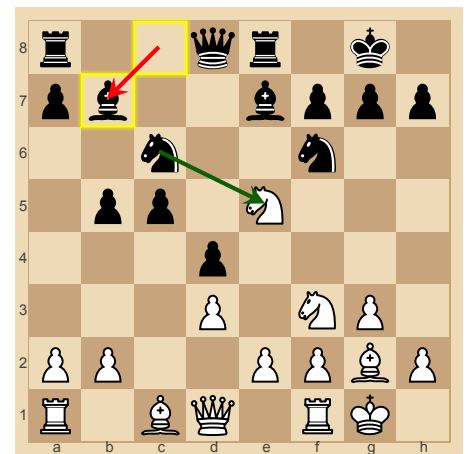
11. O-O White is -0.65 pawns.
Best moves: O-O: 0



11. ...b5 Black is -0.47 pawns.
Best moves: Nd5: +1.37
 Bf8: +1.09



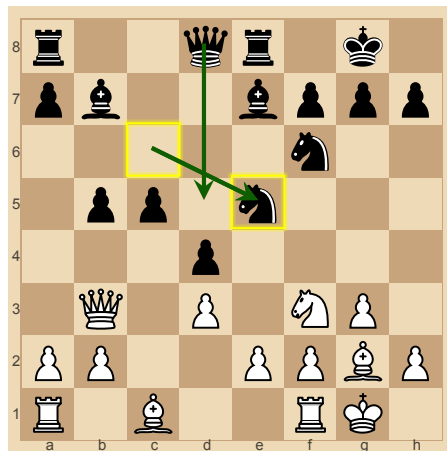
12. Nce5 White is +0.05 pawns.
Best moves: Nfe5: +0.14
 Nce5: 0



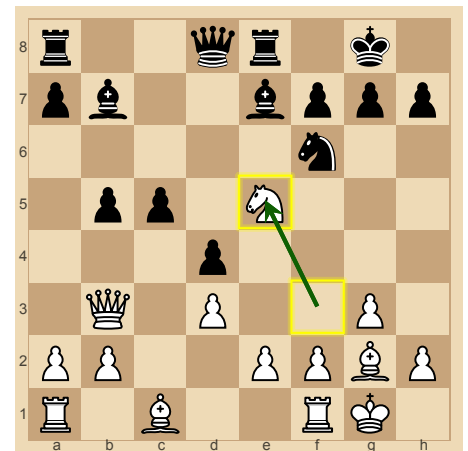
12. ...Bb7 Black is -0.87 pawns.
Best moves: Nxe5: +0.6



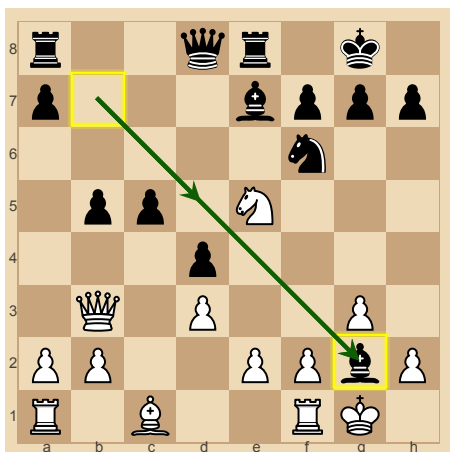
13. Qb3 White is -0.71 pawns.
Best moves: Nxf7: +0.97



13. ...Nxe5 Black is +0.9 pawns.
Best moves: Nxe5: 0
 Qd5: -0.02



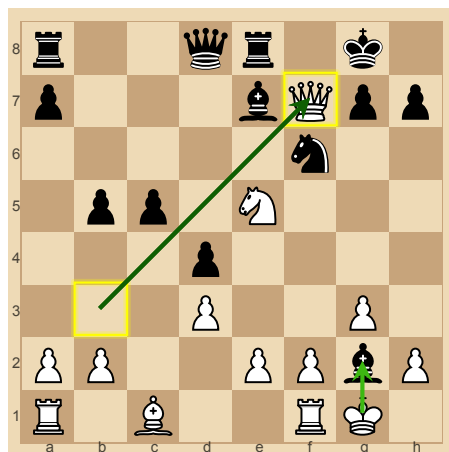
14. Nxe5 White is -0.9 pawns.
Best moves: Nxe5: 0



14. ...Bxg2 Black is +0.74 pawns.

Best moves: Bd5: +0.04

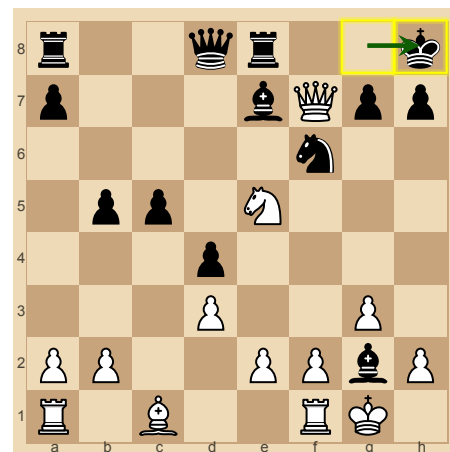
Bxg2: 0



15. Qxf7 White is -0.79 pawns.

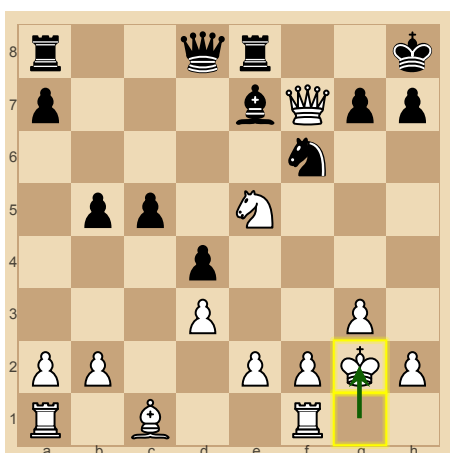
Best moves: Qxf7: 0

Kxg2: -0.21



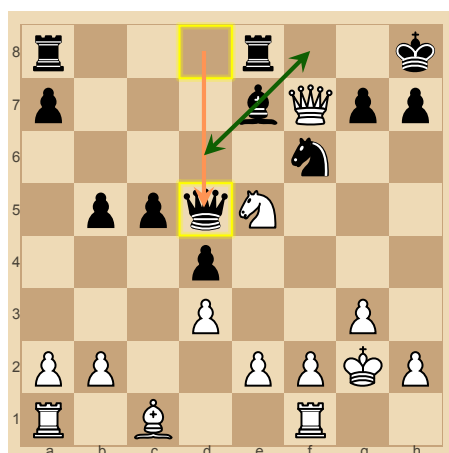
15. ...Kh8 Black is +0.62 pawns.

Best moves: Kh8: 0



16. Kxg2 White is +0.14 pawns.

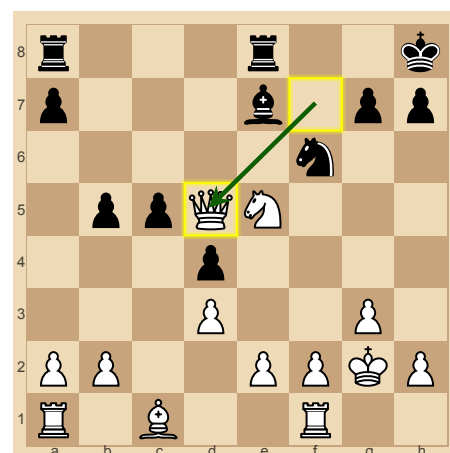
Best moves: Kxg2: 0



16. ...Qd5 Black is -0.42 pawns.

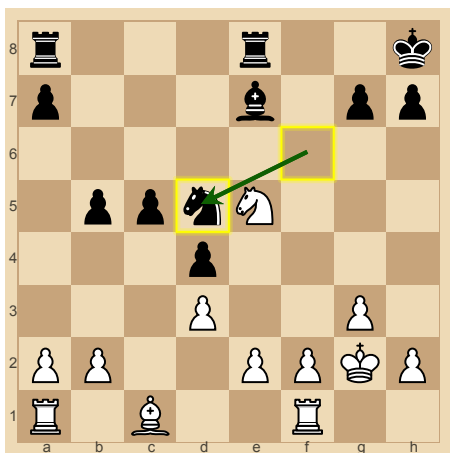
Best moves: Bd6: +0.42

Bf8: +0.42



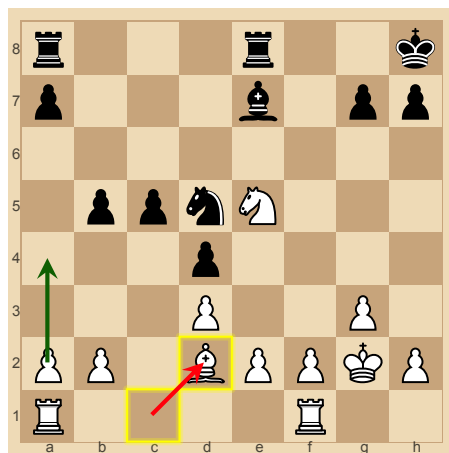
17. Qxd5 White is +0.35 pawns.

Best moves: Qxd5: 0



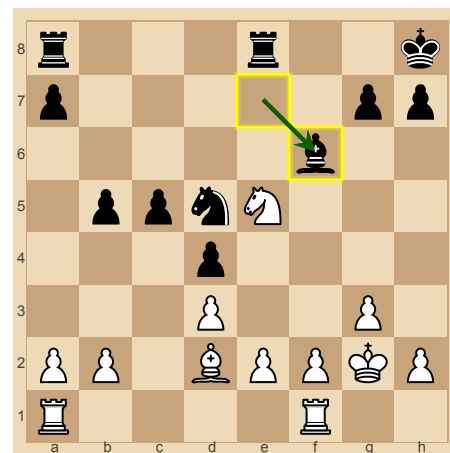
17. ...Nxd5 Black is -0.72 pawns.

Best moves: Nxd5: 0



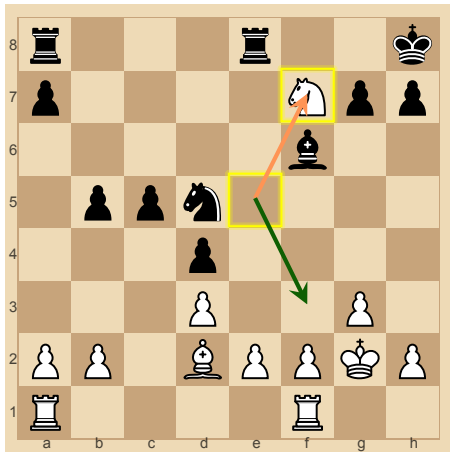
18. Bd2 White is -0.25 pawns.

Best moves: a4: +1.16

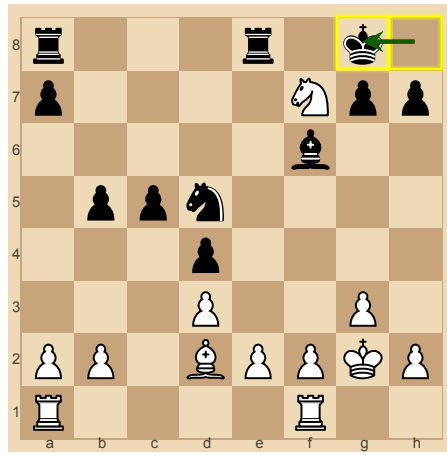


18. ...Bf6 Black is +0.29 pawns.

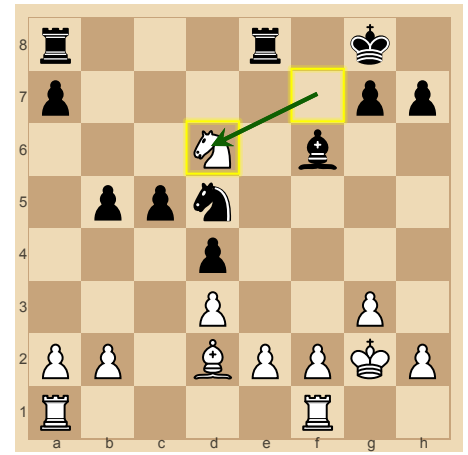
Best moves: Bf6: 0



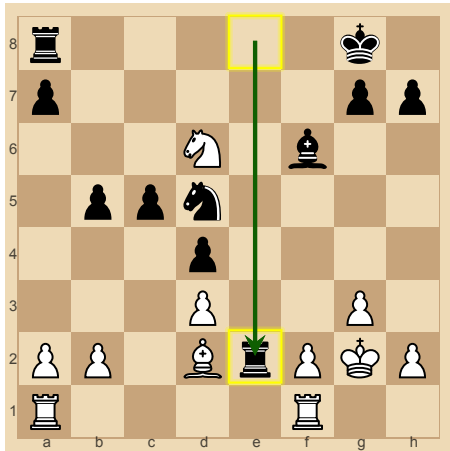
19. Nf7 White is -0.56 pawns.
Best moves: Nf3: +0.42



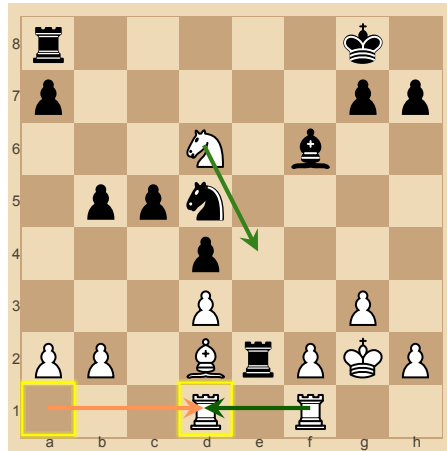
19. ...Kg8 Black is +0.46 pawns.
Best moves: Kg8: 0



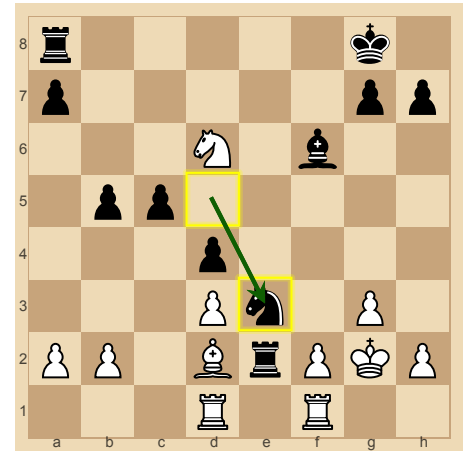
20. Nd6 White is -0.56 pawns.
Best moves: Nd6: 0



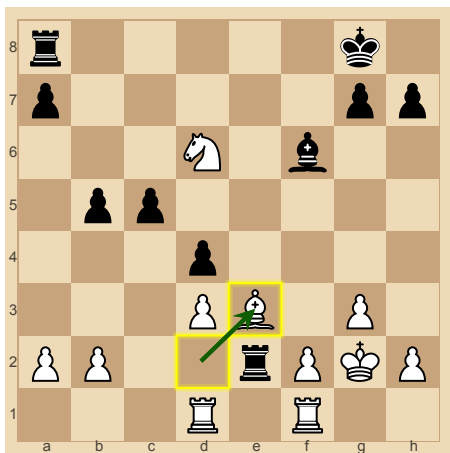
20. ...Rxe2 Black is +0.46 pawns.
Best moves: Rxe2: 0



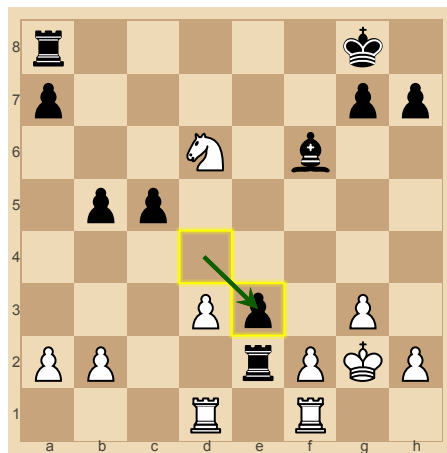
21. Rad1 White is -0.94 pawns.
Best moves: Rfd1: +0.47
 Ne4: +0.39



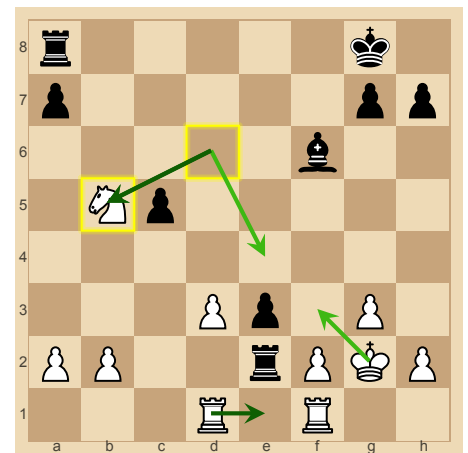
21. ...Ne3 Black is +0.95 pawns.
Best moves: Ne3: 0



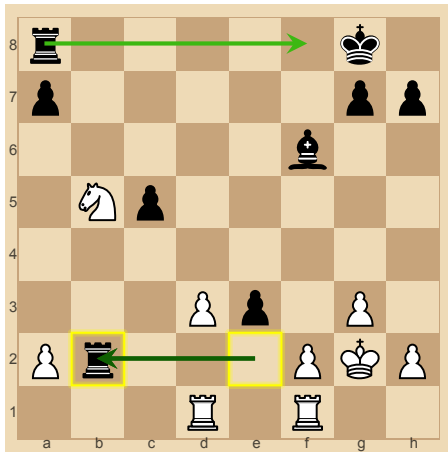
22. Bxe3 White is -0.93 pawns.
Best moves: Bxe3: 0



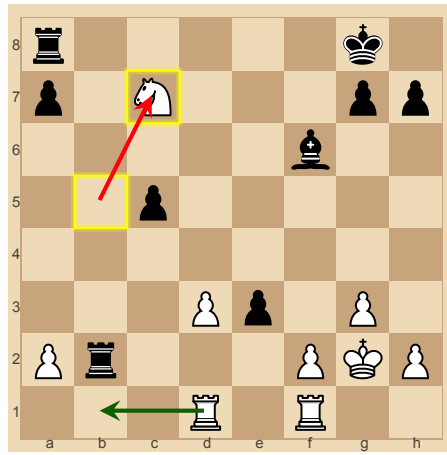
22. ...dx3 Black is +0.91 pawns.
Best moves: dx3: 0



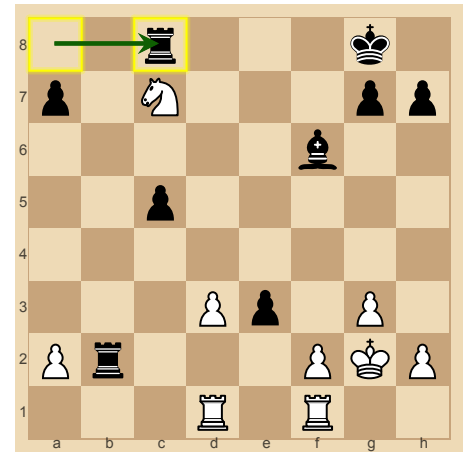
23. Nxb5 White is -1 pawns.
Best moves: Nxb5: 0
 Rde1: -0.01 Kf3: -0.2 Ne4: -0.2



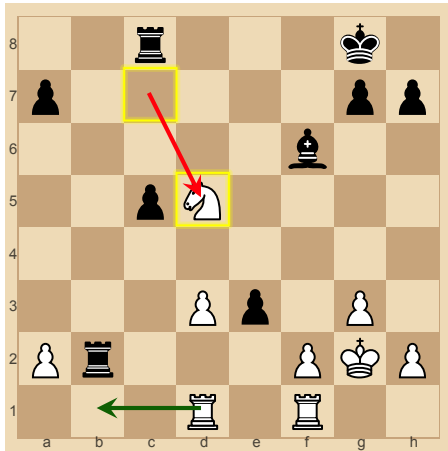
23. ...Rxb2 Black is +1.46 pawns.
Best moves: Rxb2: 0 Rf8: -0.2



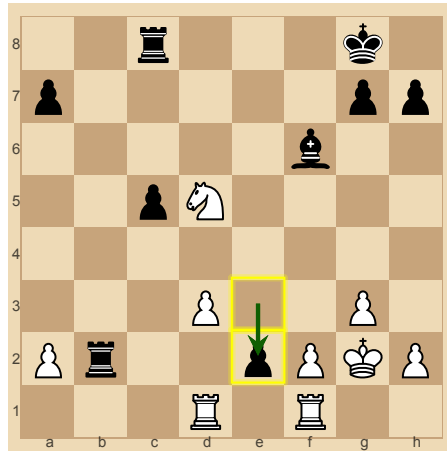
24. Nc7 White is -2.89 pawns.
Best moves: Rb1: +1.67



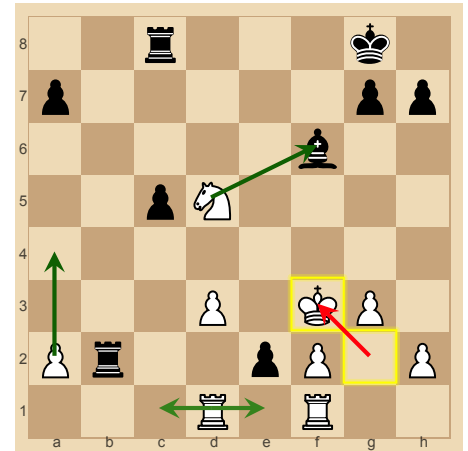
24. ...Rc8 Black is +3.05 pawns.
Best moves: Rc8: 0



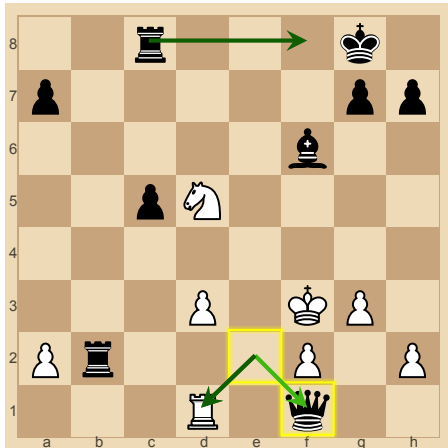
25. Nd5 White is -5.71 pawns.
Best moves: Rb1: +2.83



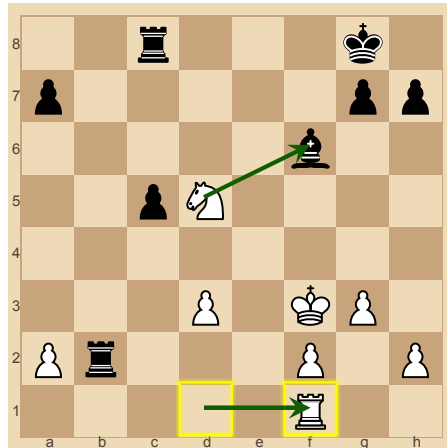
25. ...e2 Black is +5.9 pawns.
Best moves: e2: 0



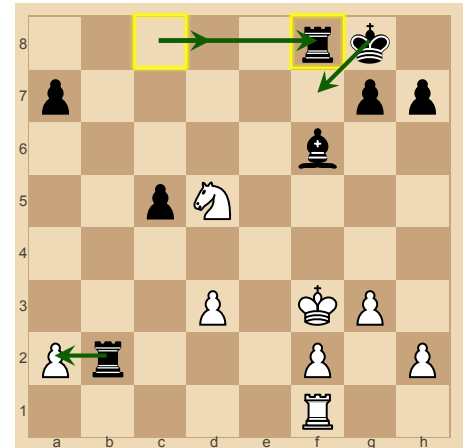
26. Kf3 White is -6.62 pawns.
Best moves: a4: +0.74
 Nxf6: +0.73 Rc1: +0.64
 Rde1: +0.6



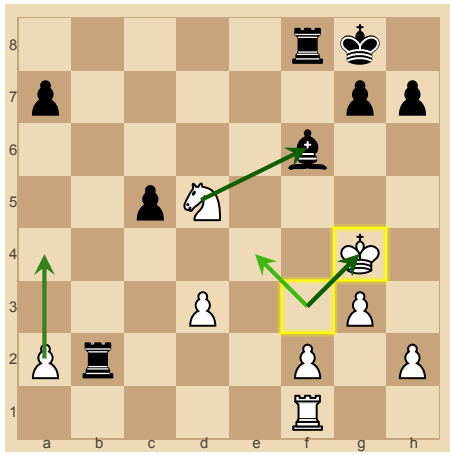
26. ...exf1=Q Black is +6.34 pawns.
Best moves: Rf8: +0.42
 exd1=B: +0.39 exd1=Q: +0.33



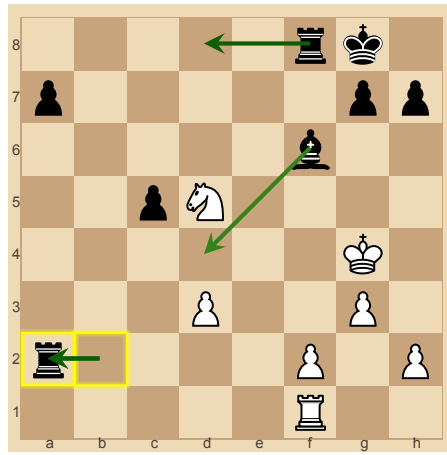
27. Rxf1 White is -6.41 pawns.
Best moves: Nxf6: +0.07
Rxf1: 0



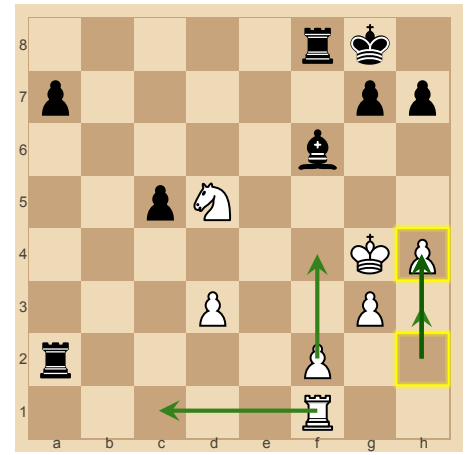
27. ...Rf8 Black is +6.31 pawns.
Best moves: Kf7: +0.01 Rf8: 0
 Rd8: -0.01 Rxa2: -0.06



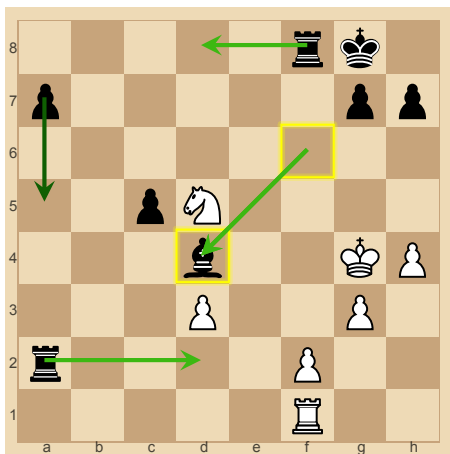
28. Kg4 White is -6.38 pawns.
Best moves: Kg4: 0
 Nxf6: -0.07 a4: -0.11 Ke4: -0.22



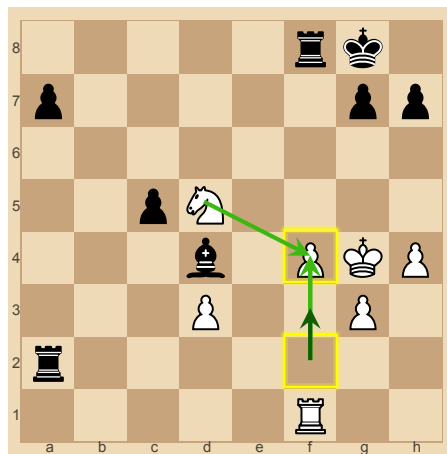
28. ...Rxa2 Black is +6.53 pawns.
Best moves: Rxa2: 0
 Rd8: -0.06 Bd4: -0.12



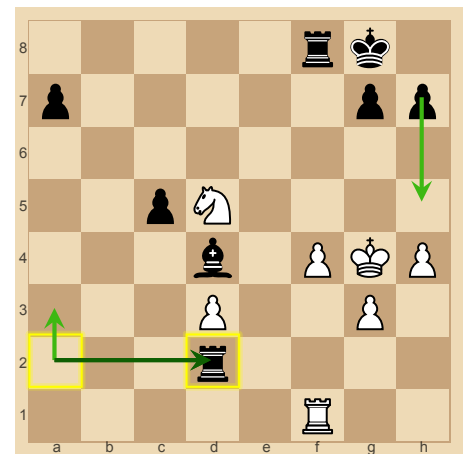
29. h4 White is -6.53 pawns.
Best moves: h4: 0 f4: -0.08
 Rc1: -0.15 h3: -0.16



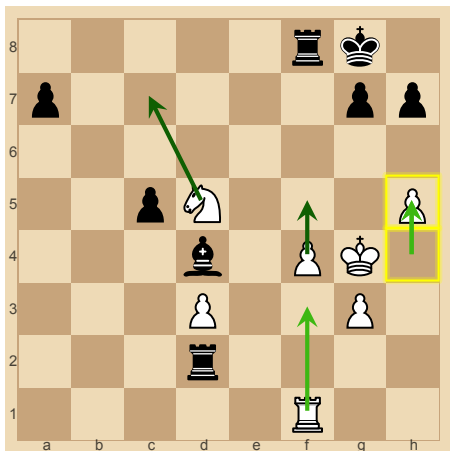
29. ...Bd4 Black is +6.43 pawns.
Best moves: a5: +0.25
 Rd8: +0.06 Rd2: 0 **Bd4: 0**



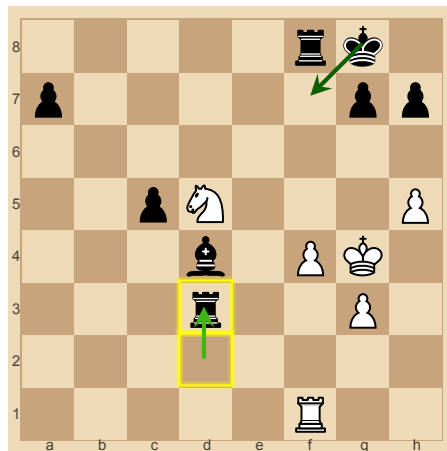
30. f4 White is -6.91 pawns.
Best moves: f3: +0.27
 Nf4: +0.05 **f4: 0**



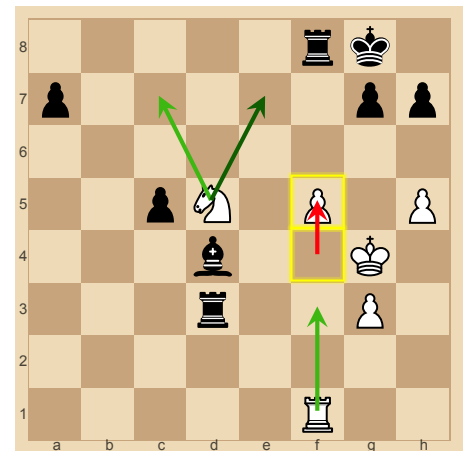
30. ...Rd2 Black is +6.95 pawns.
Best moves: Rd2: 0 h5: -0.24
 Ra3: -0.25



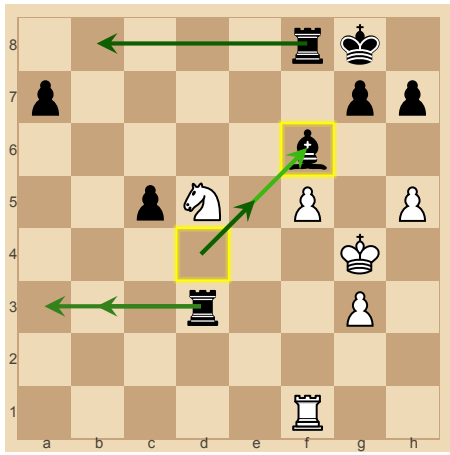
31. h5 White is -7.2 pawns.
Best moves: f5: +0.26
 Nc7: +0.22 Rf3: +0.05 **h5: 0**



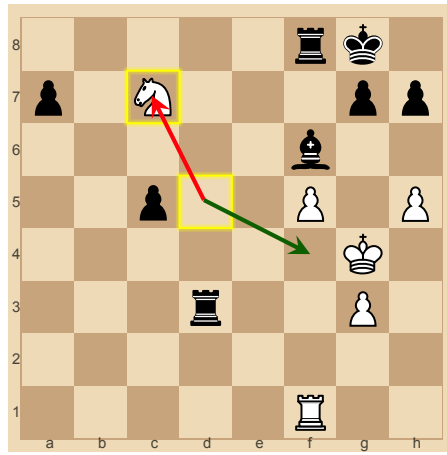
31. ...Rxd3 Black is +7.02 pawns.
Best moves: Kf7: +0.33



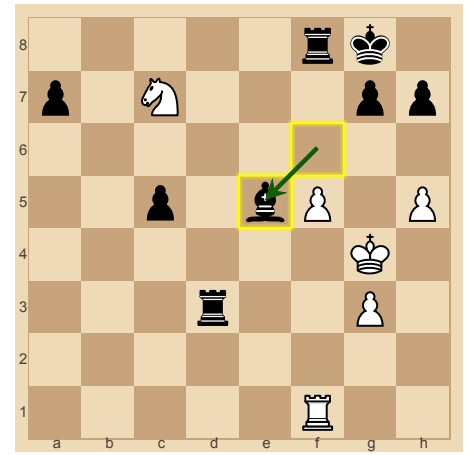
32. f5 White is -7.79 pawns.
Best moves: Ne7: +0.69
 Rf3: +0.47 Nc7: +0.43



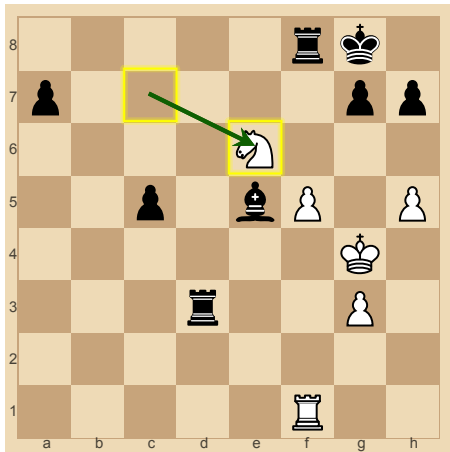
32. ...Bf6 Black is +7.06 pawns.
Best moves: Be5: +0.69
 Rb8: +0.67 Rb3: +0.54
 Ra3: +0.53



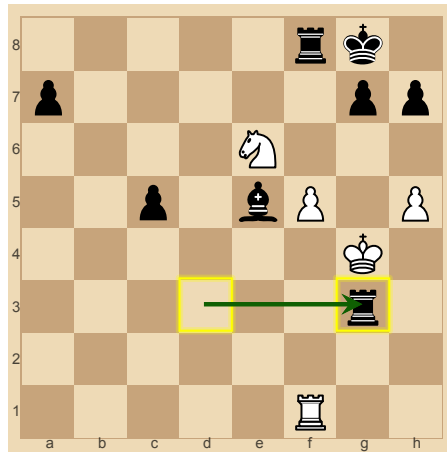
33. Nc7 White is -10.94 pawns.
Best moves: Nf4: +3.9



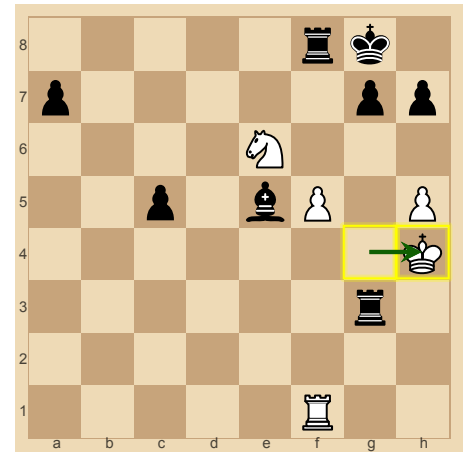
33. ...Be5 Black is +9.64 pawns.
Best moves: Be5: 0



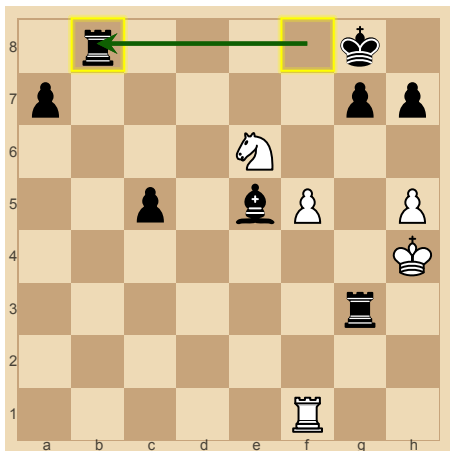
34. Ne6 White is -10.13 pawns.
Best moves: Ne6: 0



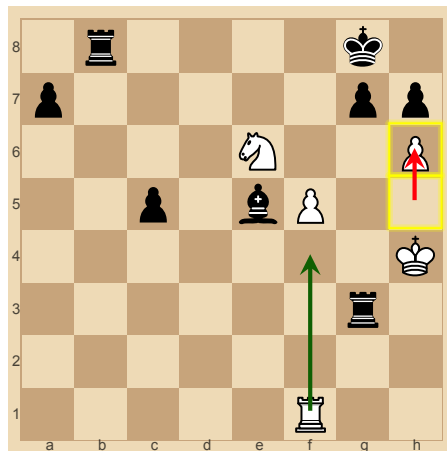
34. ...Rxc3 Black is +11.4 pawns.
Best moves: Rxc3: 0



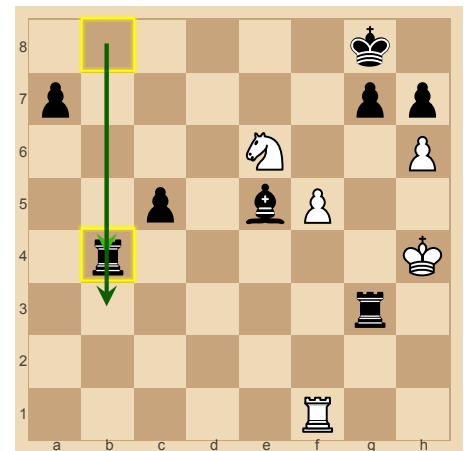
35. Kh4 White is -12.18 pawns.
Best moves: Kh4: 0



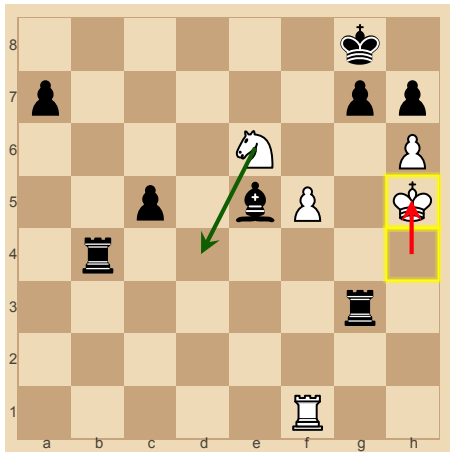
35. ...Rb8 Black is +11.97 pawns.
Best moves: Rb8: 0



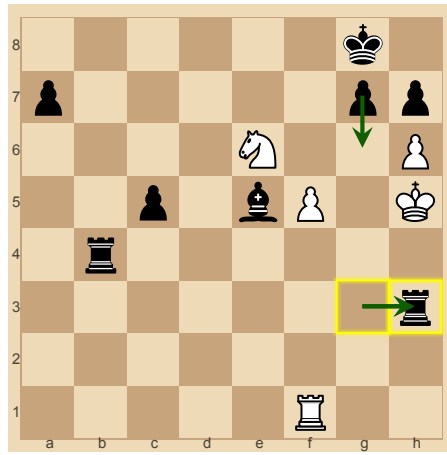
36. h6 White is -49.94 pawns.
Best moves: Rf4: +38.17



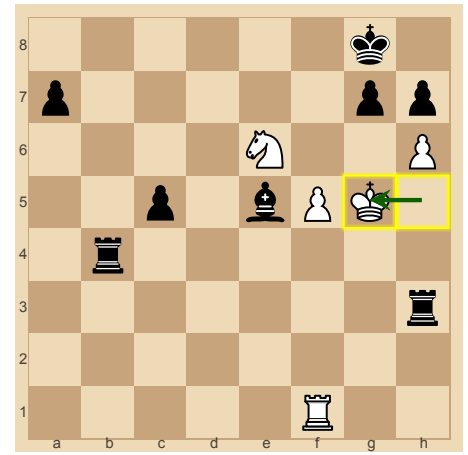
36. ...Rb4 Black is +15.46 pawns.
Best moves: Rbb3: +3.49



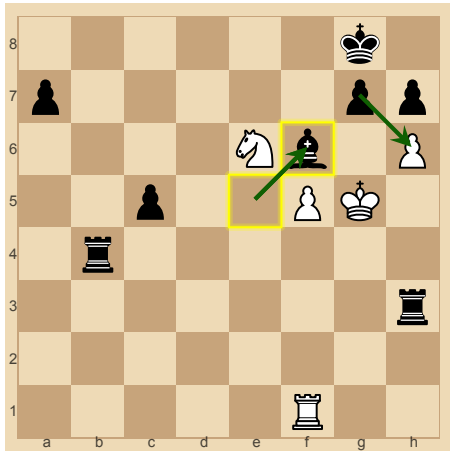
37. Kh5 White is -50 pawns.
Best moves: Nd4: +33.34



37. ...Rh3 Black is +50 pawns.
Best moves: g6: 0 Rh3: 0



38. Kg5 White is -100 pawns.
Best moves: Kg5: 0



38. ...Bf6 Black is +100 pawns.
Best moves: gxh6: 0 Bf6: 0