

Event: Tri-State
 Site:
 Date: 2019.10.14
 White: Bill, Mendenhall
 Black: Wolfgang,
 Result: 0-1
 Analyzed at October 15, 2019, 3:28 pm

www.ChessPractice.com

PGN

[Event "Tri-State"]
 [Site "<Unknown>"]
 [Date "2019.10.14"]
 [White "Bill, Mendenhall"]
 [Black "Wolfgang, "]
 [Result "0-1"]

1. e4 d6 2. Nf3 e5 3. d4 exd4 4. Nxd4 Nf6 5. f3 g6 6. Bg5 Bg7 7. c3 h6 8. Be3 O-O 9. Bc4 d5 10. exd5 Nxd5 11. Bxd5 Qxd5 12. O-O Rd8 13. Qc1 c5 14. Nb3 c4 15. Nd4 Kh7 16. Na3 Nc6 17. Rd1 Qc5 18. Ndc2 Qe7 19. Rxd8 Qxd8 20. Nxc4 Be6 21. Nd2 Qe7 22. Qf1 Bf5 23. Ne4 b6 24. Nd4 Nxd4 25. Bxd4 Bxd4 26. cxd4 Rd8 27. Qc4 Be6 28. Qc3 Rc8 29. Qd2 Rd8 30. Qc3 Rc8 31. Qd2 Kg7 32. d5 Bd7 33. Qd4 f6 34. Rd1 Qe5 35. Qxe5 fxe5 36. Nd6 Rc2 37. Re1 Kf6 38. Ne4 Ke7 39. Rb1 Bb5 40. Nc3 Bc4 41. Rd1 Rxb2 42. d6 Kd7 43. Ne4 Rxa2 44. Nf6 Kd8 45. Re1 Re2 46. Rc1 b5 47. Ne4 a5 48. Nc5 a4 49. Nxa4 bxa4 50. Rxc4 a3 51. Ra4 a2 52. Kf1 Rb2 53. Ra8 Kd7 54. Ra7 Kxd6 55. Ra6 Kd5 56. Ra5 Ke6 57. Ra6 Kf5

Game Statistics

Move statistics		
	White	Black
Best Moves	29	34
Very good Moves	7	4
Good Moves	6	6
Weak Moves	5	8
Very Weak Moves	10	5

Move Analysis

White's Move	Pawns up	Possible Moves	Black's Move	Pawns up	Possible Moves
1. e4	0.28	d4(0.3), e4(0.28), Nf3(0.22), c4(0.19),	1. ...d6	-0.49	c5(-0.24), e5(-0.27), e6(-0.31), d5(-0.46),
2. Nf3	0.47	Nf3(0.47), d4(0.46), Nc3(0.41), Ne2(0.38),	2. ...e5	-0.6	Nf6(-0.54), c5(-0.59), e5(-0.6), Nc6(-0.64),
3. d4	0.64	Nc3(0.7), d4(0.64), Bc4(0.52), h3(0.43),	3. ...exd4	-0.56	exd4(-0.56), Nf6(-0.78), Nd7(-0.86),
4. Nxd4	0.64	Nxd4(0.64), Bc4(0.54),	4. ...Nf6	-0.45	Nf6(-0.45), Be7(-0.46), Bd7(-0.58),

5. f3	0.15	Nc3(0.53),	5. ...g6	-0.56	d5(-0.03), Be7(-0.14), a6(-0.25),
6. Bg5	0.5	Bc4(0.6), Nc3(0.54), Bg5(0.5), Be2(0.39),	6. ...Bg7	-0.64	Bg7(-0.64), h6(-0.76), Be7(-0.81), Nbd7(-0.85),
7. c3	0.1	Nc3(0.71), Bc4(0.64),	7. ...h6	-0.22	O-O(-0.2), h6(-0.22), c6(-0.25), a6(-0.34),
8. Be3	-0.22	Bh4(0.32), Bf4(0.12),	8. ...O-O	0.16	O-O(0.16),
9. Bc4	-0.52	Be2(-0.11), Bd3(-0.27), Nc2(-0.35),	9. ...d5	0.32	d5(0.32), Nbd7(0.06),
10. exd5	-0.34	exd5(-0.34),	10. ...Nxd5	0.48	Nxd5(0.48), Nbd7(0.35),
11. Bxd5	-0.66	Bf2(-0.44), Bxd5(-0.66),	11. ...Qxd5	0.43	Qxd5(0.43),
12. O-O	-0.15	O-O(-0.15), Qd2(-0.37), Na3(-0.44),	12. ...Rd8	0.37	Re8(0.51), Nc6(0.51), Rd8(0.37),
13. Qc1	-0.25	Na3(-0.06), Qc1(-0.25), Qd2(-0.29),	13. ...c5	-0.05	Nc6(0.26), h5(0.08), Qh5(0.03), g5(0.02),
14. Nb3	-0.42	Nc2(-0.16), Ne2(-0.18), Nb5(-0.31), Nb3(-0.42),	14. ...c4	0.1	Nc6(0.16), c4(0.1), b6(0.02), g5(0),
15. Nd4	0.09	Nd4(0.09), Nc5(-0.09),	15. ...Kh7	-0.14	h5(0.1), Nc6(0.06), Be6(-0.04), Kh7(-0.14),
16. Na3	0.01	Rd1(0.11), Na3(0.01), Ne2(-0.1),	16. ...Nc6	-0.01	Nc6(-0.01), Bxd4(-0.26),
17. Rd1	0.09	Ndb5(0.54),	17. ...Qc5	-0.17	Ne5(0), Nxd4(-0.13), Bxd4(-0.14), Qc5(-0.17),
18. Ndc2	0.25	Kh1(0.35), Ndc2(0.25), Nac2(0.12),	18. ...Qe7	-0.18	Rxd1(-0.17), Qe7(-0.18), Qf8(-0.46),
19. Rxd8	0.16	Rxd8(0.16), Nxc4(0.12), Bd4(-0.11),	19. ...Qxd8	-0.15	Qxd8(-0.15),
20. Nxc4	0.09	Qf1(0.15), Nxc4(0.09), Qe1(-0.08),	20. ...Be6	-0.43	Qd3(-0.21), Be6(-0.43), Qe7(-0.47),
21. Nd2	0.48	Nd2(0.48), Qf1(0.4),	21. ...Qe7	-0.36	Qe7(-0.36), Qc7(-0.37), b6(-0.48), Bf5(-0.59),
22. Qf1	-0.52	Nb3(0.39), Qe1(0.34), Ne4(0.18), h3(0.14),	22. ...Bf5	0.31	Bf5(0.31),
23. Ne4	-0.23	Ne4(-0.23),	23. ...b6	-0.52	Bxe4(0.11),
24. Nd4	0.04	Qc4(0.22), Qd3(0.21), Bd4(0.13), Nd4(0.04),	24. ...Nxd4	-0.29	Bxe4(-0.04), Nxd4(-0.29),
25. Bxd4	0.27	Bxd4(0.27),	25. ...Bxd4	-0.76	Be6(-0.33), Re8(-0.39), Rf8(-0.42), Rd8(-0.48),
26. cxd4	0.81	cxd4(0.81),	26. ...Rd8	-0.8	Re8(-0.6), Kg7(-0.66), Bd7(-0.74), Rd8(-0.8),
27. Qc4	0.38	Qf2(0.87), Rd1(0.75),	27. ...Be6	-0.25	Kg7(-0.16), Bxe4(-0.24), Be6(-0.25), b5(-0.25),
28. Qc3	0.44	Qc3(0.44),	28. ...Rc8	-0.85	f5(-0.41),
29. Qd2	1.02	Qd2(1.02), Qe1(0.82),	29. ...Rd8	-0.86	Kg7(-0.81), Rd8(-0.86), Bd5(-0.87), Bf5(-1.11),

30. Qc3	0.44	Nc3(0.87), b3(0.82), h3(0.73), Kh1(0.7),	30. ...Rc8	-0.85	f5(-0.41),
31. Qd2	1.02	Qd2(1.02), Qe1(0.82),	31. ...Kg7	-0.81	Kg7(-0.81), Rd8(-0.86), Bd5(-0.87), Bf5(-1.11),
32. d5	1.19	d5(1.19), Nc3(1.02), Re1(0.9),	32. ...Bd7	-1.4	Bf5(-1.16), Bd7(-1.4),
33. Qd4	1.12	Re1(1.37), Qd4(1.12), g4(1.08),	33. ...f6	-0.96	f6(-0.96),
34. Rd1	1.09	Re1(1.28), a3(1.09), Rd1(1.09),	34. ...Qe5	-1.46	Rc2(-0.86), Kf7(-0.92), g5(-1.03),
35. Qxe5	1.58	Qxe5(1.58),	35. ...fxe5	-1.41	fxe5(-1.41),
36. Nd6	0.43	Rd3(1.49), b3(1.4), Kf2(1.32), Rd2(1.32),	36. ...Rc2	-1.03	Rc2(-1.03),
37. Re1	0.15	Ne4(0.87),	37. ...Kf6	-0.08	Kf6(-0.08), Rxb2(-0.15), g5(-0.35),
38. Ne4	0.34	b3(0.4), Ne4(0.34),	38. ...Ke7	-0.12	Ke7(-0.12), Kg7(-0.41),
39. Rb1	0.08	b4(0.28), b3(0.27), Rb1(0.08), Nc3(0),	39. ...Bb5	-0.16	Bc8(0.19), Bf5(0), g5(-0.1),
40. Nc3	-0.39	b3(0.2), a3(0.13), d6(0),	40. ...Bc4	0.05	Bc4(0.05), Ba6(0), Bd7(0), Bd3(-0.2),
41. Rd1	-0.64	a3(0), h4(0), Re1(0), h3(-0.02),	41. ...Rxb2	0.54	Rxb2(0.54), b5(0.32),
42. d6	-0.66	Re1(-0.52), d6(-0.66),	42. ...Kd7	0.4	Kd8(0.82), Ke8(0.53),
43. Ne4	-0.97	Rc1(-0.85), a3(-0.91), Ne4(-0.97), a4(-1.07),	43. ...Rxa2	0.57	Bxa2(0.75), Rxa2(0.57),
44. Nf6	-1.06	Nf6(-1.06), h3(-1.21), Rc1(-1.28),	44. ...Kd8	1.08	Kd8(1.08),
45. Re1	-1.02	Re1(-1.02), h4(-1.09), Rb1(-1.2),	45. ...Re2	0.64	Rd2(0.97), Be2(0.77), a5(0.7),
46. Rc1	-1.04	Rxe2(-1.02), Rc1(-1.04),	46. ...b5	1.11	b5(1.11),
47. Ne4	-1.8	Ra1(-1.15),	47. ...a5	1.04	a5(1.04), a6(1.02), h5(0.99), Ra2(0.8),
48. Nc5	-0.99	Nc5(-0.99),	48. ...a4	0	Rd2(1.25),
49. Nxa4	-3.29	Rd1(0),	49. ...bxa4	3.36	bxa4(3.36),
50. Rxc4	-3.58	Rxc4(-3.58),	50. ...a3	3.39	a3(3.39),
51. Ra4	-5.52	Rc1(-3.95),	51. ...a2	5.52	a2(5.52),
52. Kf1	-5.66	f4(-5.64), Kf1(-5.66), Ra8(-5.85), g4(-5.9),	52. ...Rb2	5.76	Rd2(5.77), Rb2(5.76), Rc2(5.65),
53. Ra8	-6.03	g4(-5.87), h4(-5.88), Ra7(-5.89), Ra8(-6.03),	53. ...Kd7	5.9	Kd7(5.9),
54. Ra7	-6.12	Ra7(-6.12), h4(-6.22), g4(-6.22), g3(-6.35),	54. ...Kxd6	5.98	Kxd6(5.98),
55. Ra6	-6.1	Ra6(-6.1), h4(-6.25), h3(-6.3), Ra5(-6.38),	55. ...Kd5	6.29	Kc5(6.31), Kd5(6.29),
56. Ra5	-6.12	Ra5(-6.12), h4(-6.37), g4(-6.41),	56. ...Ke6	5.56	Kd4(6.25), Kd6(6.19), Kc4(6.14), Kc6(6.12),

57. Ra6

-6.12

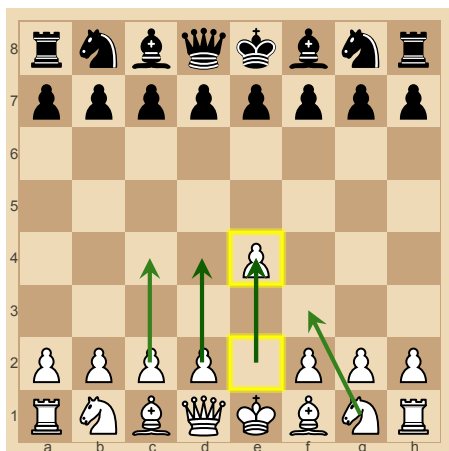
Ra6(-6.12), g3(-6.41),

57. ...Kf5

5.98

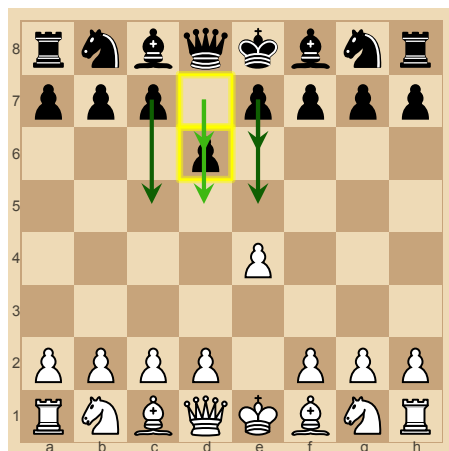
Kd5(6.29), Ke7(6.05),

Move Boards



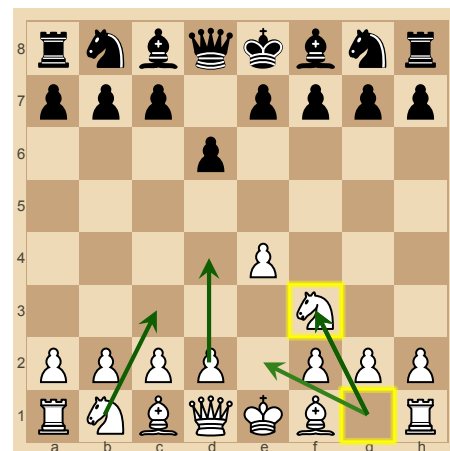
1. e4 White is +0.28 pawns.

Best moves: d4: +0.02 e4: 0
Nf3: -0.06 c4: -0.09



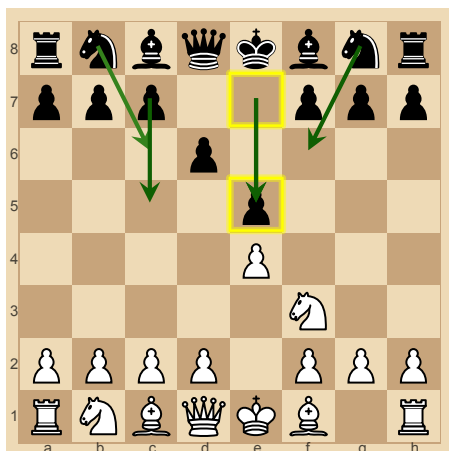
1. ...d6 Black is -0.49 pawns.

Best moves: c5: +0.25
e5: +0.22 e6: +0.18 d5: +0.03



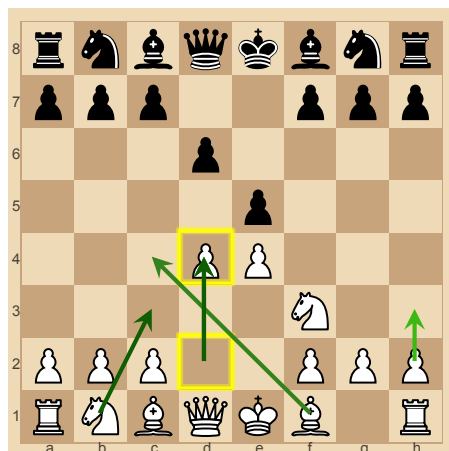
2. Nf3 White is +0.47 pawns.

Best moves: Nf3: 0 d4: -0.01
Nc3: -0.06 Ne2: -0.09



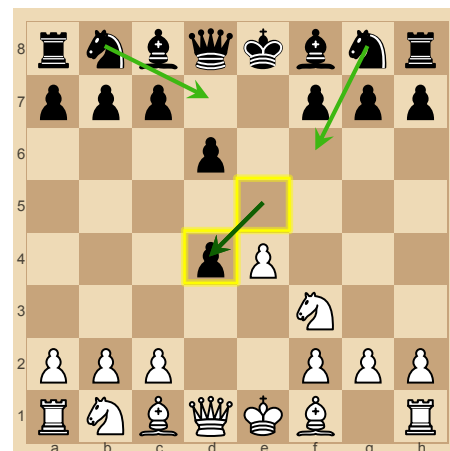
2. ...e5 Black is -0.6 pawns.

Best moves: Nf6: +0.06
c5: +0.01 e5: 0 Nc6: -0.04



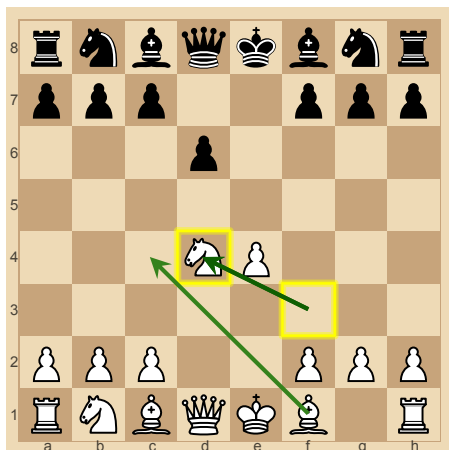
3. d4 White is +0.64 pawns.

Best moves: Nc3: +0.06 d4: 0
Bc4: -0.12 h3: -0.21



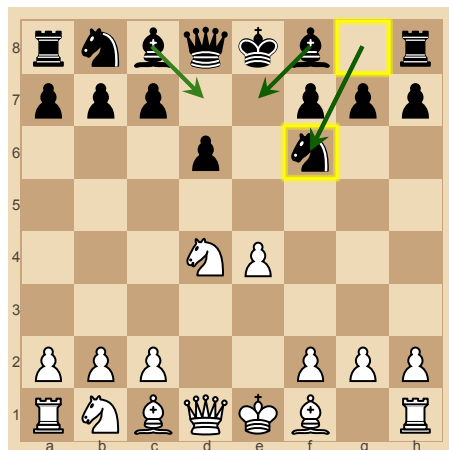
3. ...exd4 Black is -0.56 pawns.

Best moves: exd4: 0 Nf6: -0.22
Nd7: -0.3



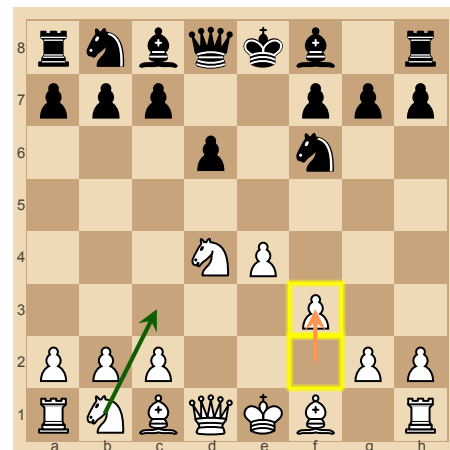
4. Nxd4 White is +0.64 pawns.

Best moves: Nxd4: 0 Bc4: -0.1



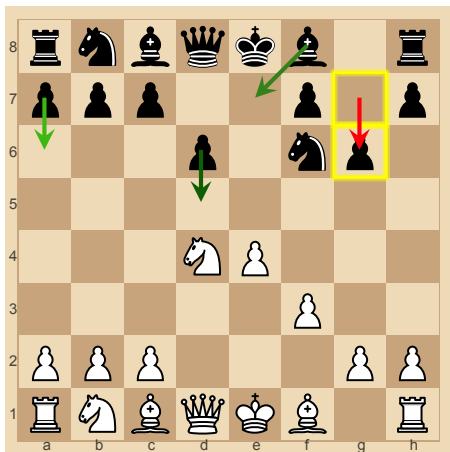
4. ...Nf6 Black is -0.45 pawns.

Best moves: Nf6: 0 Be7: -0.01
Bd7: -0.13

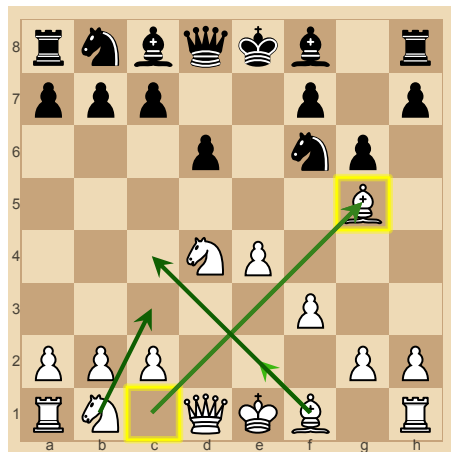


5. f3 White is +0.15 pawns.

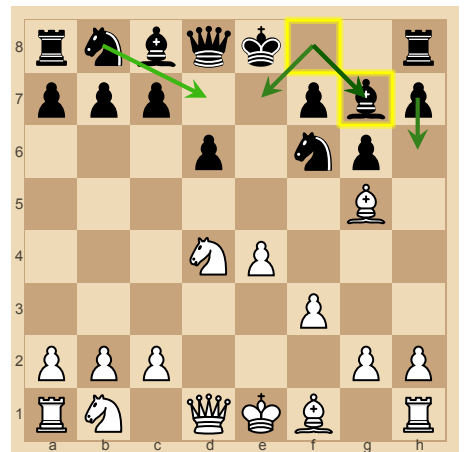
Best moves: Nc3: +0.38



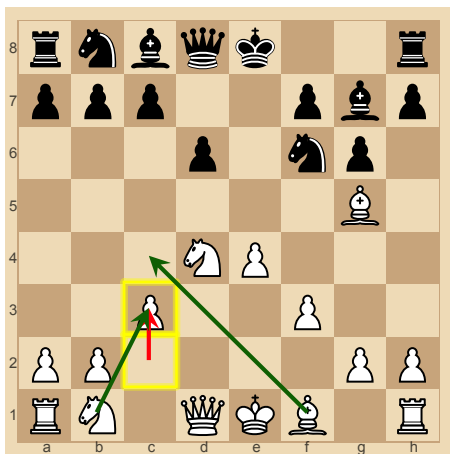
5. ...g6 Black is -0.56 pawns.
Best moves: d5: +0.53
 Be7: +0.42 a6: +0.31



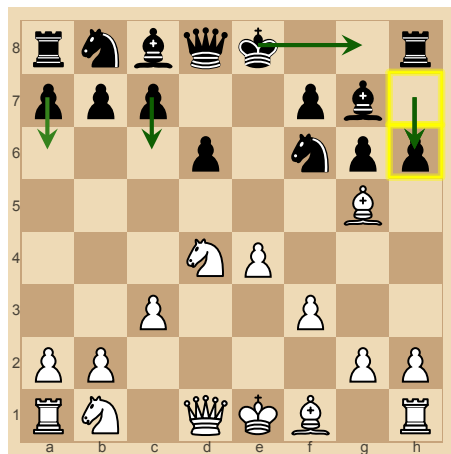
6. Bg5 White is +0.5 pawns.
Best moves: Bc4: +0.1
 Nc3: +0.04 Bg5: 0 Be2: -0.11



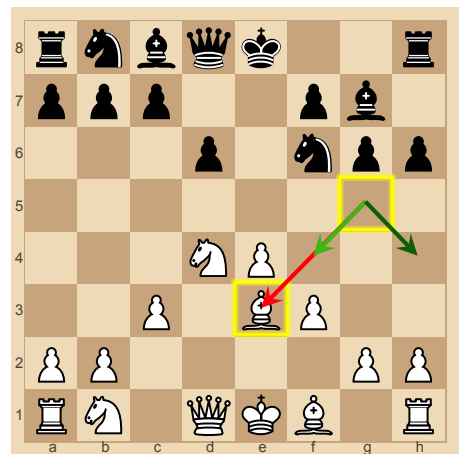
6. ...Bg7 Black is -0.64 pawns.
Best moves: Bg7: 0 h6: -0.12
 Be7: -0.17 Nbd7: -0.21



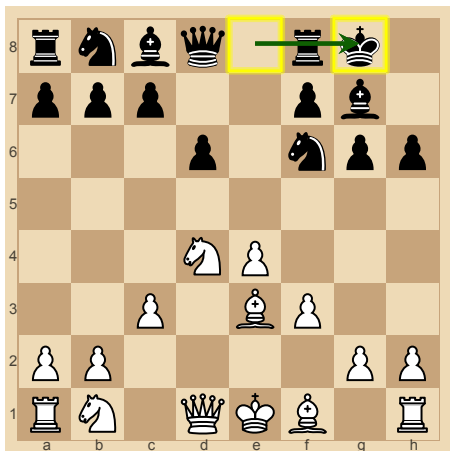
7. c3 White is +0.1 pawns.
Best moves: Nc3: +0.61
 Bc4: +0.54



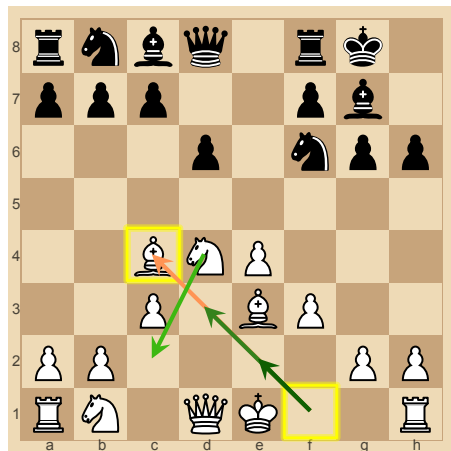
7. ...h6 Black is -0.22 pawns.
Best moves: O-O: +0.02 h6: 0
 c6: -0.03 a6: -0.12



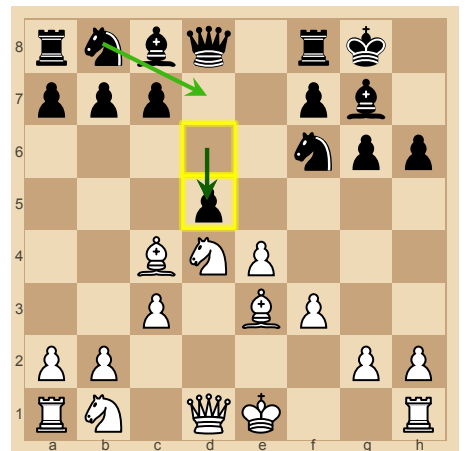
8. Be3 White is -0.22 pawns.
Best moves: Bh4: +0.54
 Bf4: +0.34



8. ...O-O Black is +0.16 pawns.
Best moves: O-O: 0



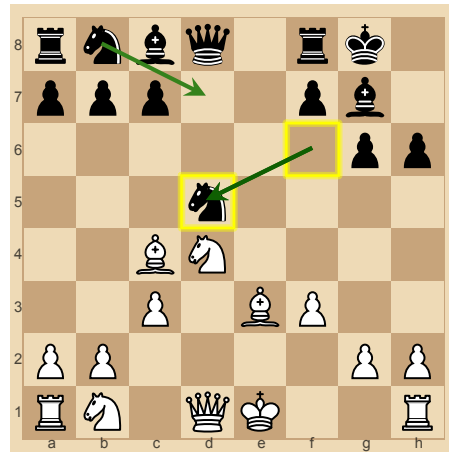
9. Bc4 White is -0.52 pawns.
Best moves: Be2: +0.41
 Bd3: +0.25 Nc2: +0.17



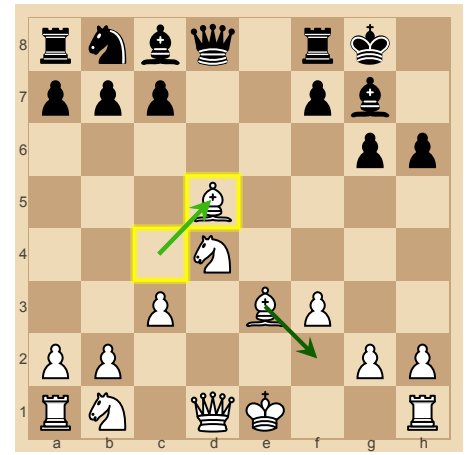
9. ...d5 Black is +0.32 pawns.
Best moves: d5: 0 Nbd7: -0.26



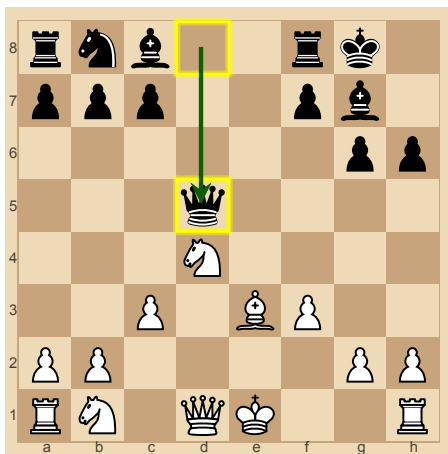
10. exd5 White is -0.34 pawns.
Best moves: exd5: 0



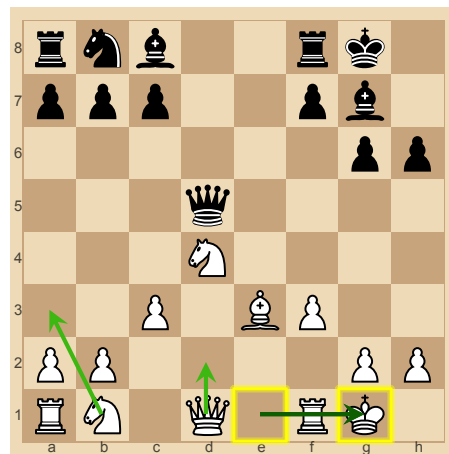
10. ...Nxd5 Black is +0.48 pawns.
Best moves: Nxd5: 0
 Nbd7: -0.13



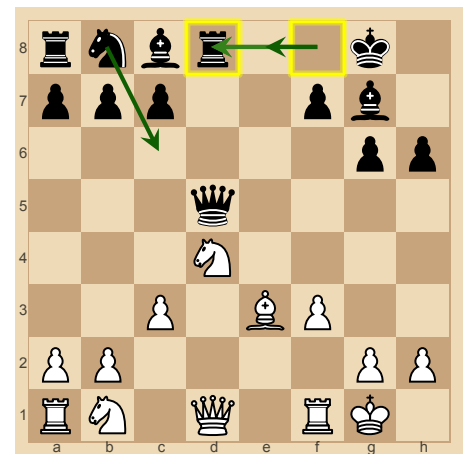
11. Bxd5 White is -0.66 pawns.
Best moves: Bf2: +0.22
Bxd5: 0



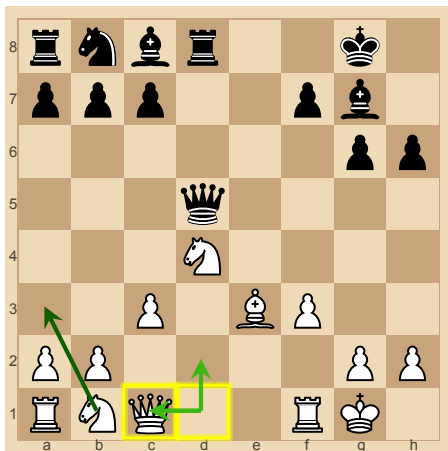
11. ...Qxd5 Black is +0.43 pawns.
Best moves: Qxd5: 0



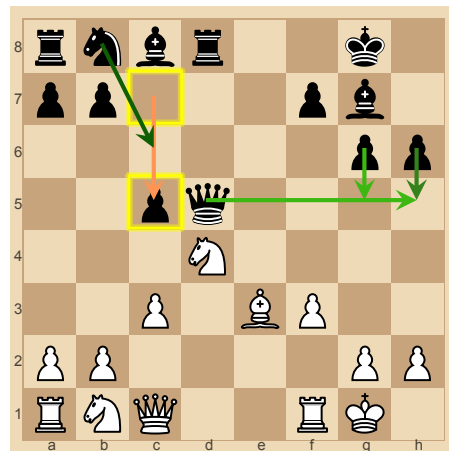
12. O-O White is -0.15 pawns.
Best moves: O-O: 0 Qd2: -0.22
 Na3: -0.29



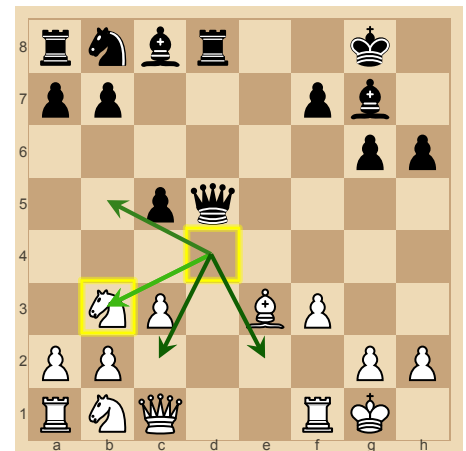
12. ...Rd8 Black is +0.37 pawns.
Best moves: Re8: +0.14
 Nc6: +0.14 Rd8: 0



13. Qc1 White is -0.25 pawns.
Best moves: Na3: +0.19
Qc1: 0 Qd2: -0.04



13. ...c5 Black is -0.05 pawns.
Best moves: Nc6: +0.31
 h5: +0.13 Qh5: +0.08 g5: +0.07



14. Nb3 White is -0.42 pawns.
Best moves: Nc2: +0.26
 Ne2: +0.24 Nb5: +0.11 Nb3: 0



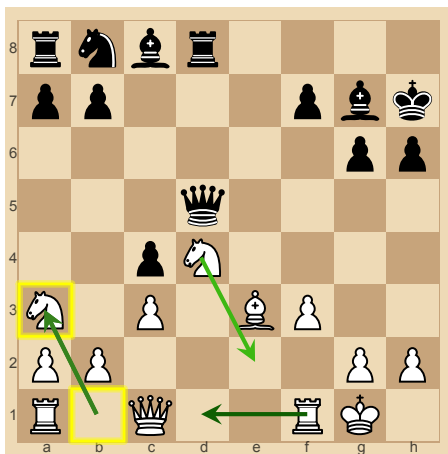
14. ...c4 Black is +0.1 pawns.
Best moves: Nc6: +0.06 c4: 0
 b6: -0.08 g5: -0.1



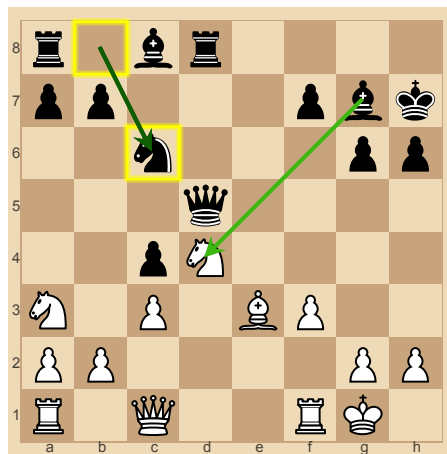
15. Nd4 White is +0.09 pawns.
Best moves: Nd4: 0 Nc5: -0.18



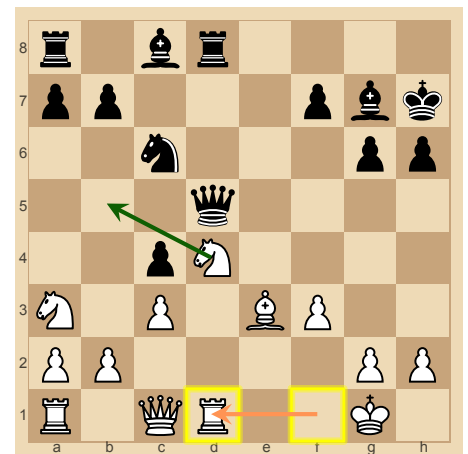
15. ...Kh7 Black is -0.14 pawns.
Best moves: h5: +0.24
 Nc6: +0.2 Be6: +0.1 Kh7: 0



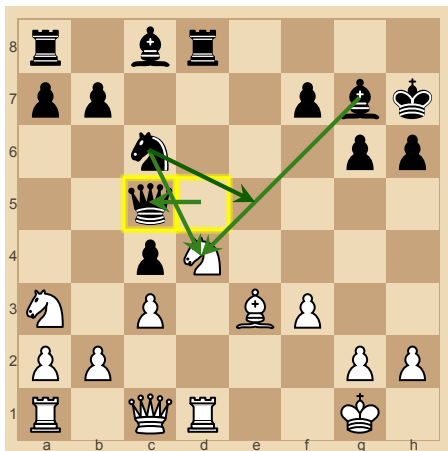
16. Na3 White is +0.01 pawns.
Best moves: Rd1: +0.1 Na3: 0
 Ne2: -0.11



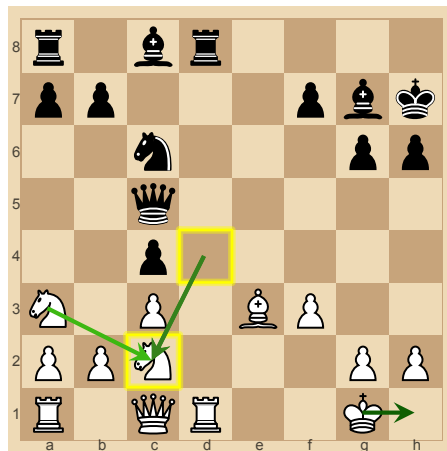
16. ...Nc6 Black is -0.01 pawns.
Best moves: Nc6: 0
 Bxd4: -0.25



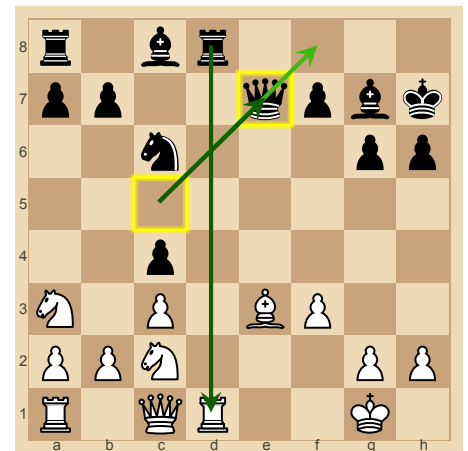
17. Rd1 White is +0.09 pawns.
Best moves: Ndb5: +0.45



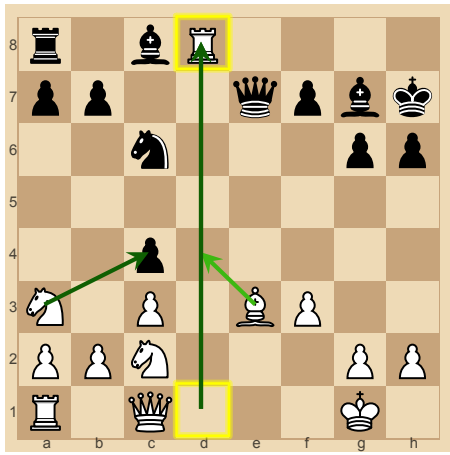
17. ...Qc5 Black is -0.17 pawns.
Best moves: Ne5: +0.17
 Nxd4: +0.04 Bxd4: +0.03
Qc5: 0



18. Ndc2 White is +0.25 pawns.
Best moves: Kh1: +0.1 Ndc2: 0
 Nac2: -0.13



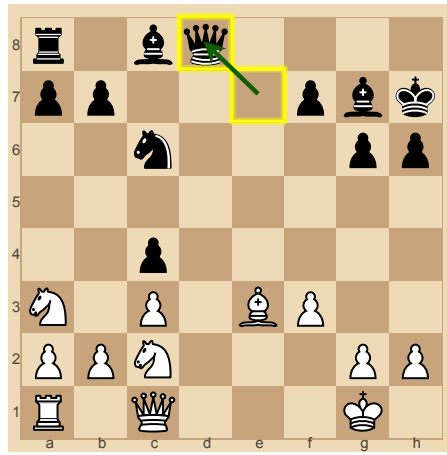
18. ...Qe7 Black is -0.18 pawns.
Best moves: Rxd1: +0.01
Qe7: 0 Qf8: -0.28



19. Rxd8 White is +0.16 pawns.

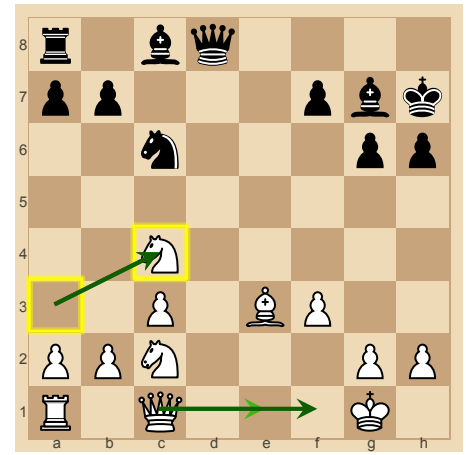
Best moves: Rxd8: 0

Nxc4: -0.04 Bd4: -0.27



19. ...Qxd8 Black is -0.15 pawns.

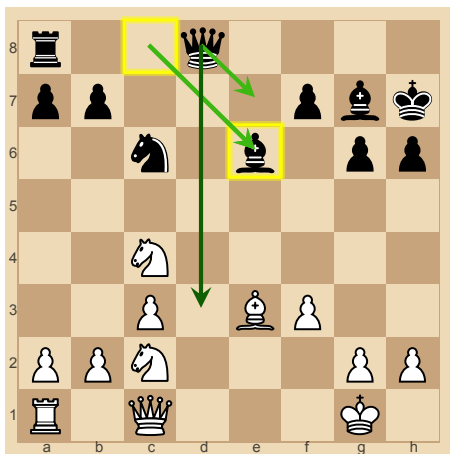
Best moves: Qxd8: 0



20. Nxc4 White is +0.09 pawns.

Best moves: Qf1: +0.06

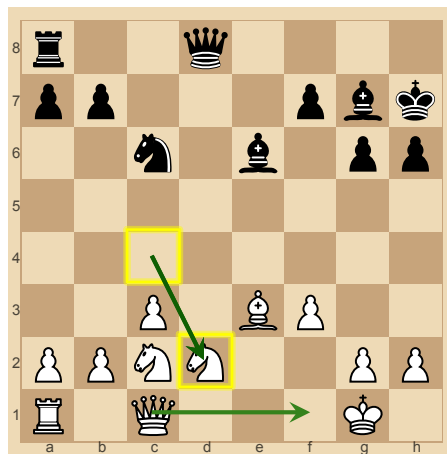
Nxc4: 0 Qe1: -0.17



20. ...Be6 Black is -0.43 pawns.

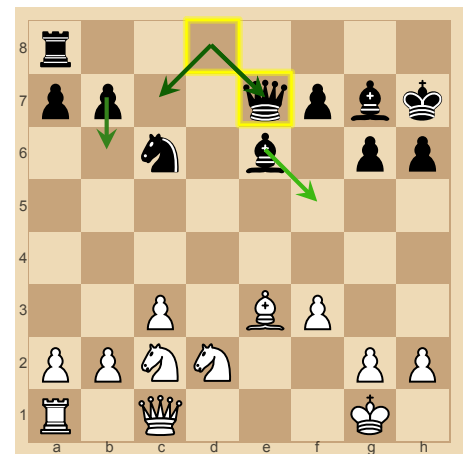
Best moves: Qd3: +0.22

Be6: 0 Qe7: -0.04



21. Nd2 White is +0.48 pawns.

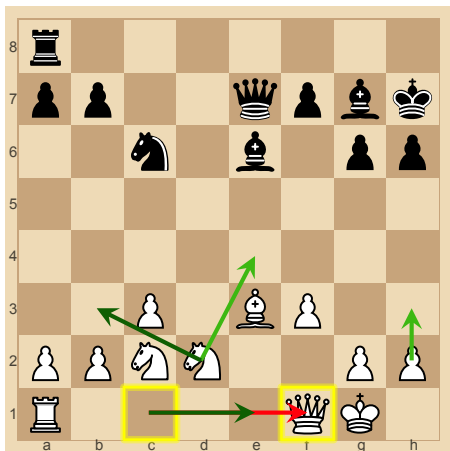
Best moves: Nd2: 0 Qf1: -0.08



21. ...Qe7 Black is -0.36 pawns.

Best moves: Qe7: 0 Qc7: -0.01

b6: -0.12 Bf5: -0.23

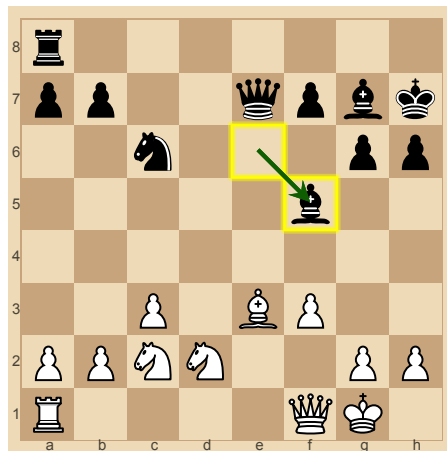


22. Qf1 White is -0.52 pawns.

Best moves: Nb3: +0.91

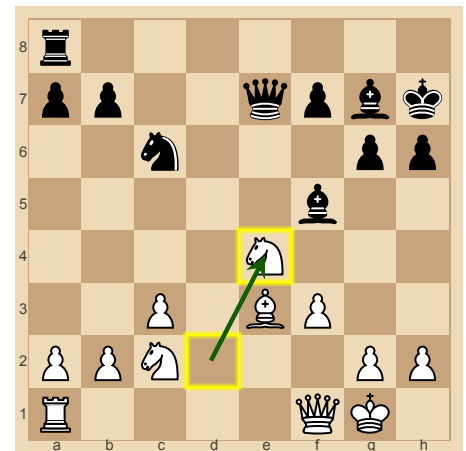
Qe1: +0.86 Ne4: +0.7

h3: +0.66



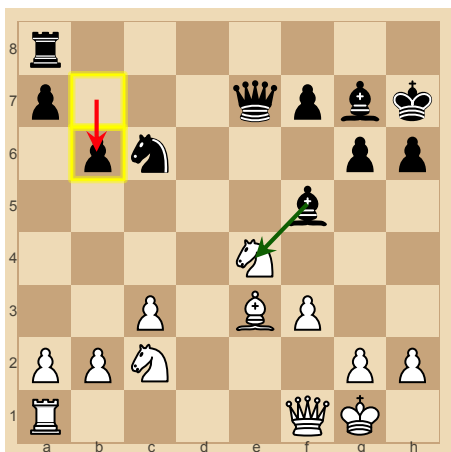
22. ...Bf5 Black is +0.31 pawns.

Best moves: Bf5: 0



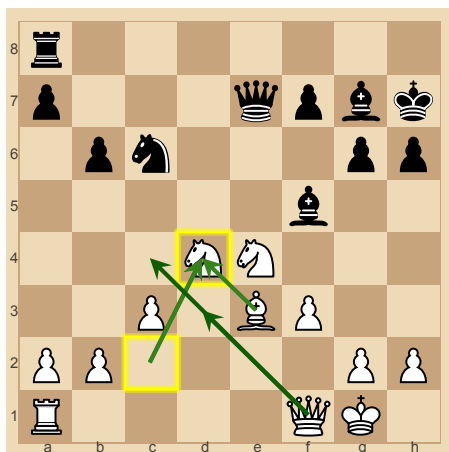
23. Ne4 White is -0.23 pawns.

Best moves: Ne4: 0



23. ...b6 Black is -0.52 pawns.

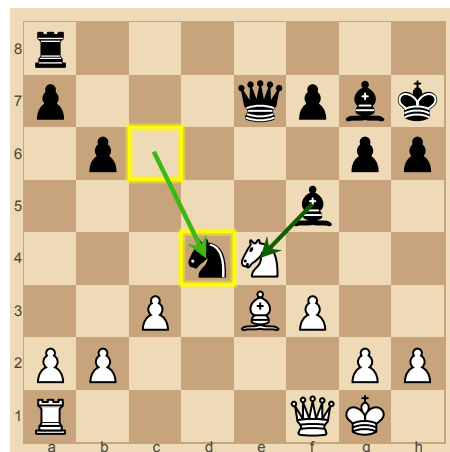
Best moves: Bxe4: +0.63



24. Nd4 White is +0.04 pawns.

Best moves: Qc4: +0.18

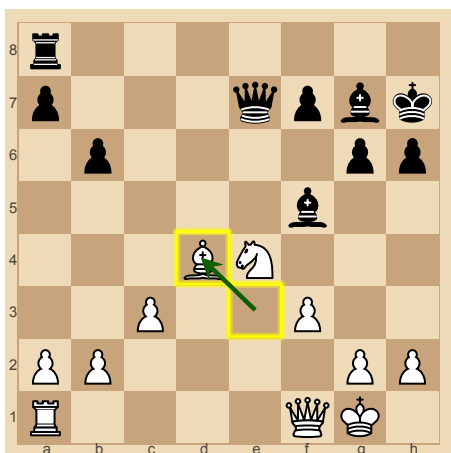
Qd3: +0.17 Bd4: +0.09 Nd4: 0



24. ...Nxd4 Black is -0.29 pawns.

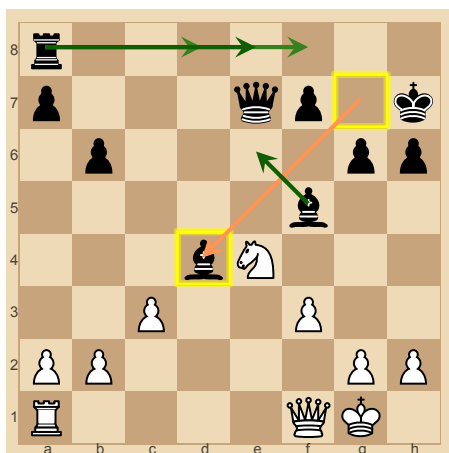
Best moves: Bxe4: +0.25

Nxd4: 0



25. Bxd4 White is +0.27 pawns.

Best moves: Bxd4: 0

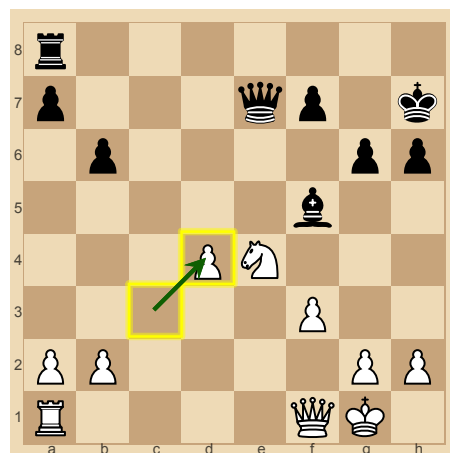


25. ...Bxd4 Black is -0.76 pawns.

Best moves: Be6: +0.43

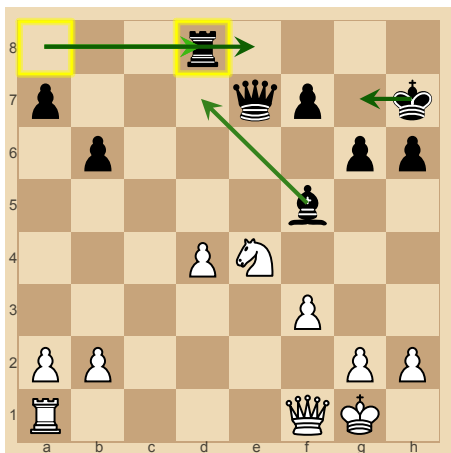
Re8: +0.37 Rf8: +0.34

Rd8: +0.28



26. cxd4 White is +0.81 pawns.

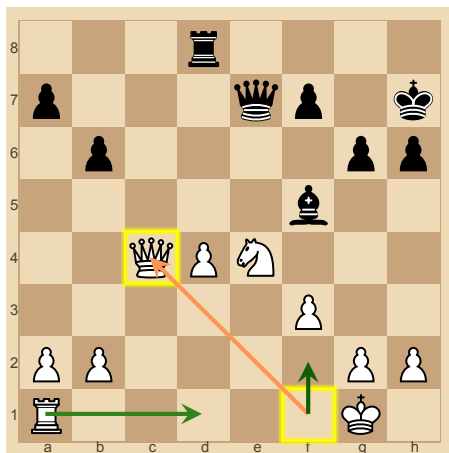
Best moves: cxd4: 0



26. ...Rd8 Black is -0.8 pawns.

Best moves: Re8: +0.2

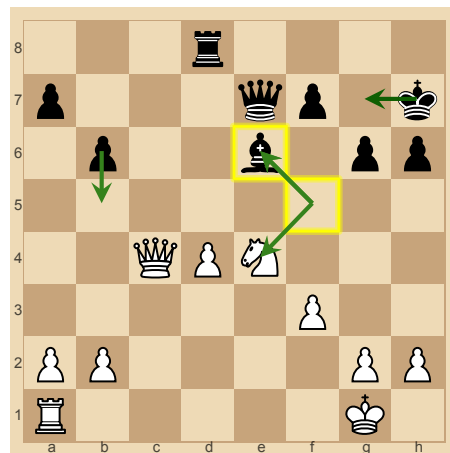
Kg7: +0.14 Bd7: +0.06 Rd8: 0



27. Qc4 White is +0.38 pawns.

Best moves: Qf2: +0.49

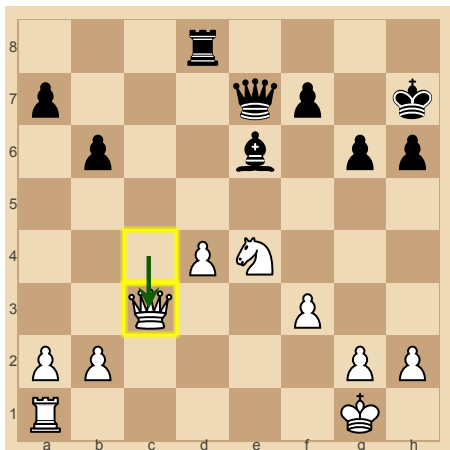
Rd1: +0.37



27. ...Be6 Black is -0.25 pawns.

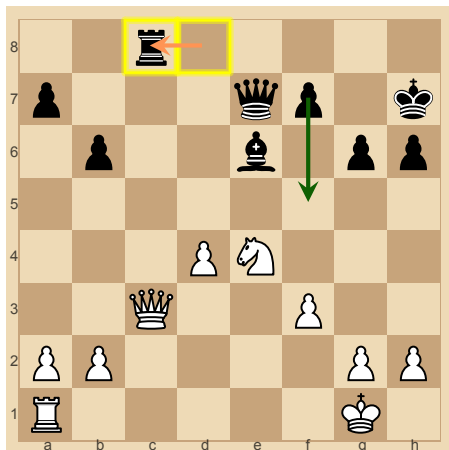
Best moves: Kg7: +0.09

Bxe4: +0.01 Be6: 0 b5: 0



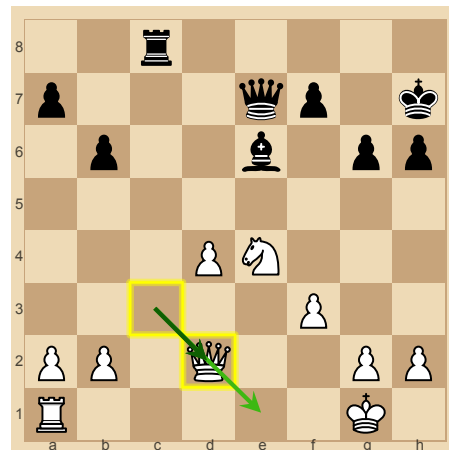
28. Qc3 White is +0.44 pawns.

Best moves: Qc3: 0



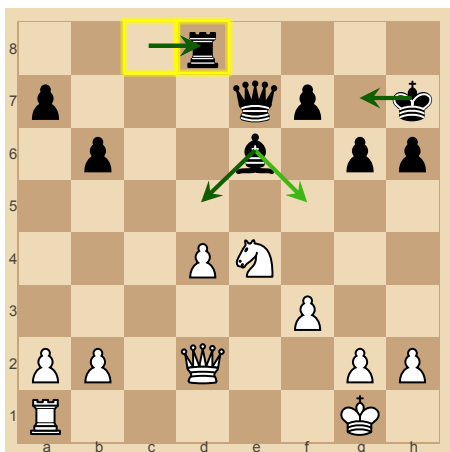
28. ...Rc8 Black is -0.85 pawns.

Best moves: f5: +0.44



29. Qd2 White is +1.02 pawns.

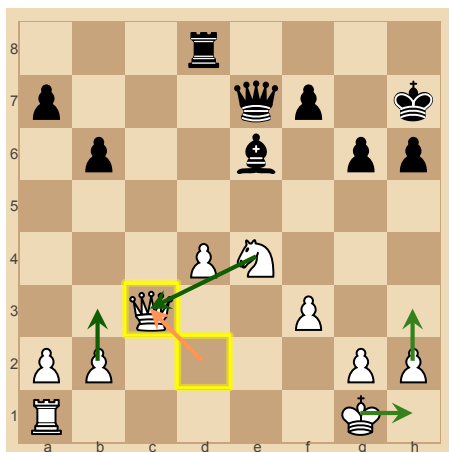
Best moves: Qd2: 0 Qe1: -0.2



29. ...Rd8 Black is -0.86 pawns.

Best moves: Kg7: +0.05 Rd8: 0

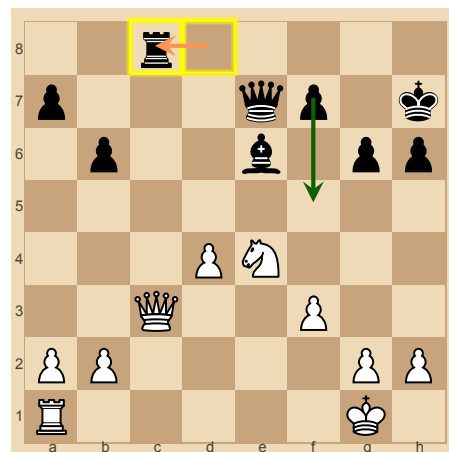
Bd5: -0.01 Bf5: -0.25



30. Qc3 White is +0.44 pawns.

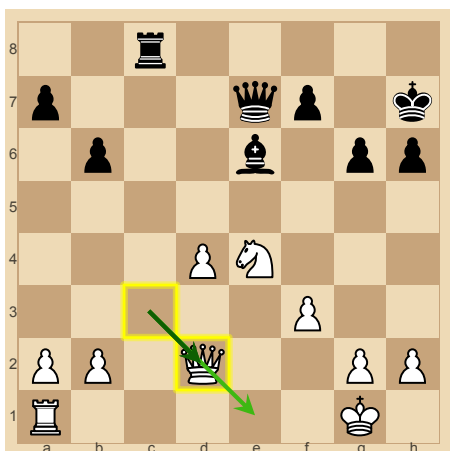
Best moves: Nc3: +0.43

b3: +0.38 h3: +0.29 Kh1: +0.26



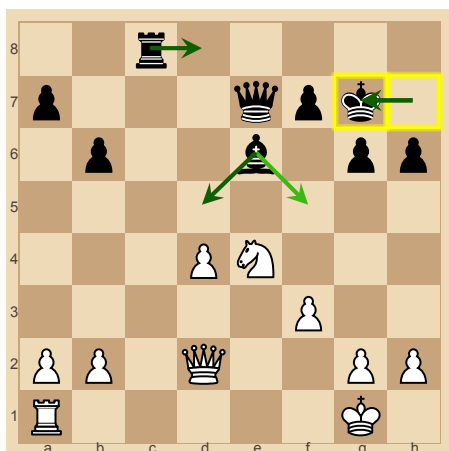
30. ...Rc8 Black is -0.85 pawns.

Best moves: f5: +0.44



31. Qd2 White is +1.02 pawns.

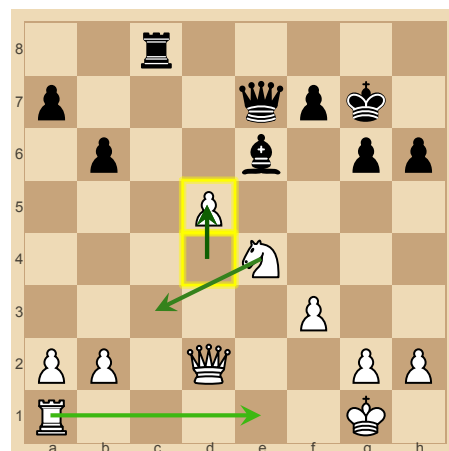
Best moves: Qd2: 0 Qe1: -0.2



31. ...Kg7 Black is -0.81 pawns.

Best moves: Kg7: 0 Rd8: -0.05

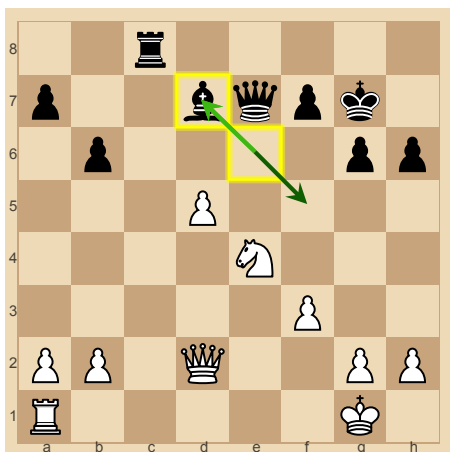
Bd5: -0.06 Bf5: -0.3



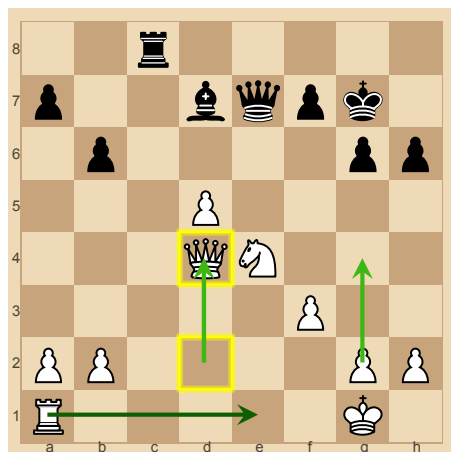
32. d5 White is +1.19 pawns.

Best moves: d5: 0 Nc3: -0.17

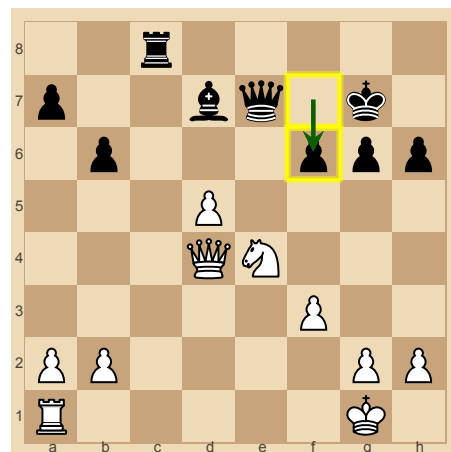
Re1: -0.29



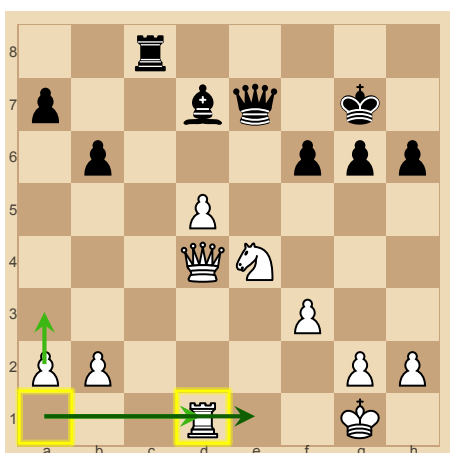
32. ...Bd7 Black is -1.4 pawns.
Best moves: Bf5: +0.24 Bd7: 0



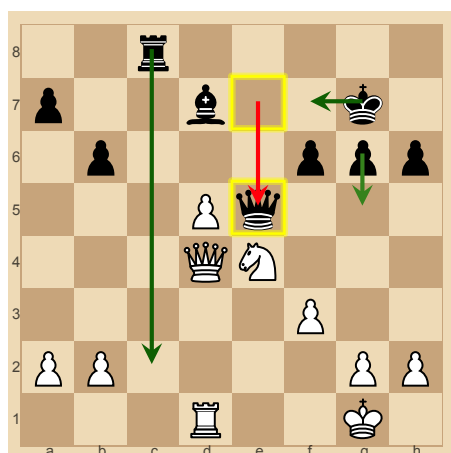
33. Qd4 White is +1.12 pawns.
Best moves: Re1: +0.25
 Qd4: 0 g4: -0.04



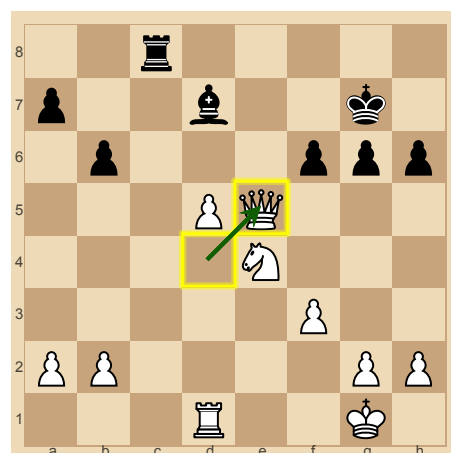
33. ...f6 Black is -0.96 pawns.
Best moves: f6: 0



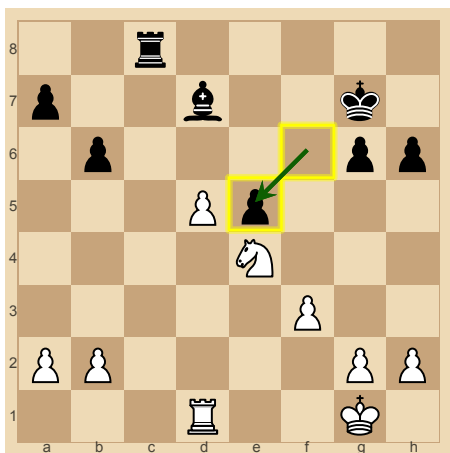
34. Rd1 White is +1.09 pawns.
Best moves: Re1: +0.19 a3: 0
 Rd1: 0



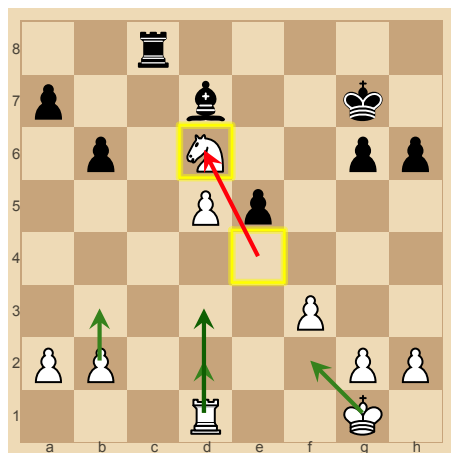
34. ...Qe5 Black is -1.46 pawns.
Best moves: Rc2: +0.6
 Kf7: +0.54 g5: +0.43



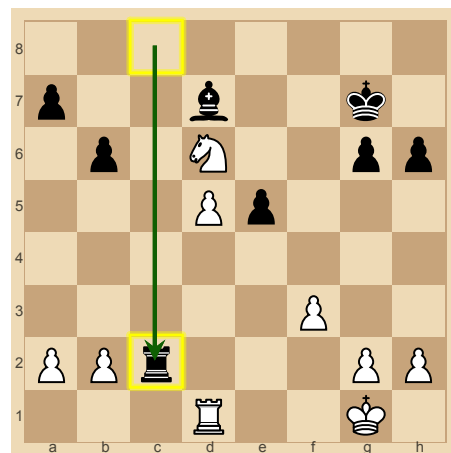
35. Qxe5 White is +1.58 pawns.
Best moves: Qxe5: 0



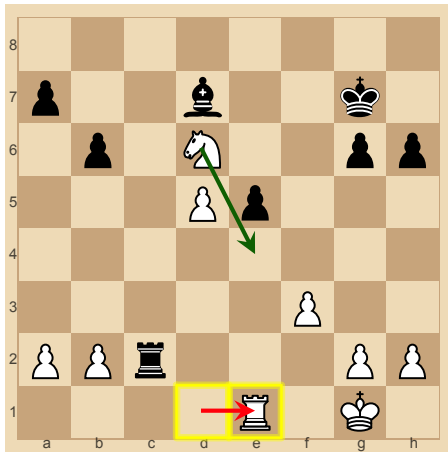
35. ...fxe5 Black is -1.41 pawns.
Best moves: fxe5: 0



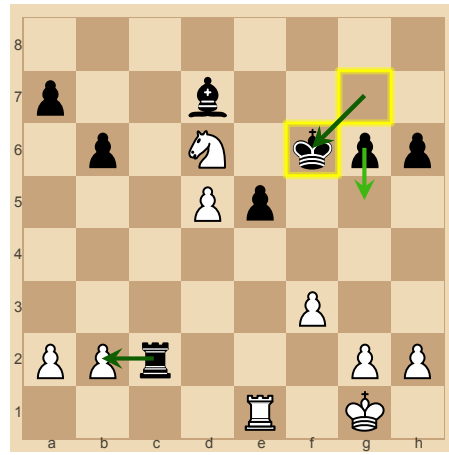
36. Nd6 White is +0.43 pawns.
Best moves: Rd3: +1.06
 b3: +0.97 Kf2: +0.89
 Rd2: +0.89



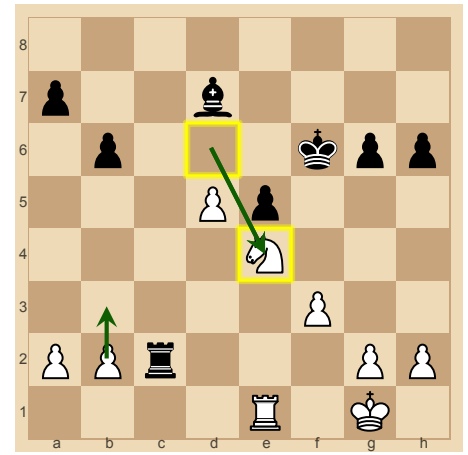
36. ...Rc2 Black is -1.03 pawns.
Best moves: Rc2: 0



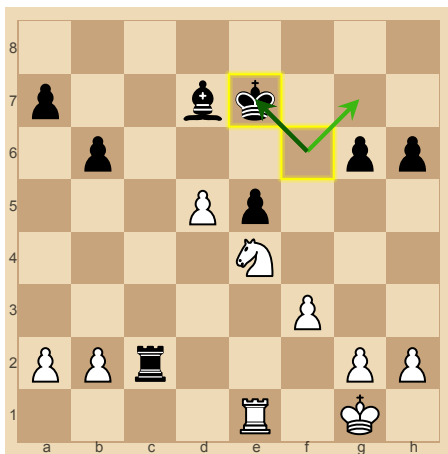
37. Re1 White is +0.15 pawns.
Best moves: Ne4: +0.72



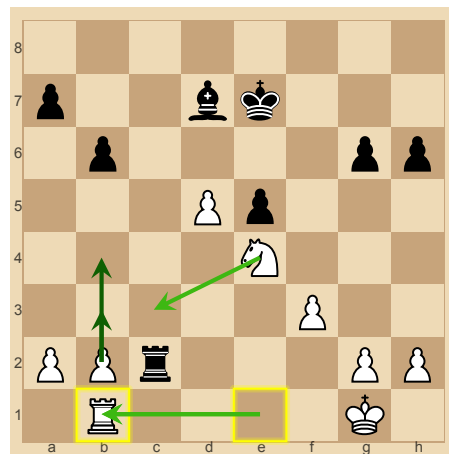
37. ...Kf6 Black is -0.08 pawns.
Best moves: Kf6: 0
 Rxb2: -0.07 g5: -0.27



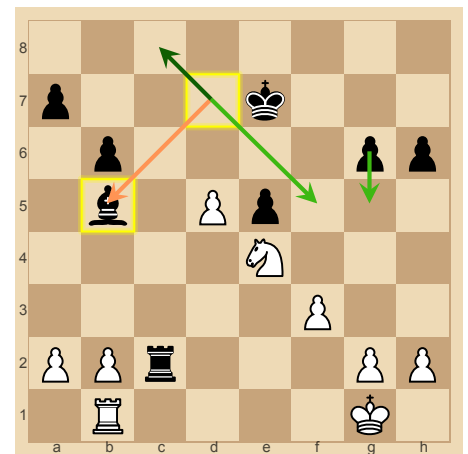
38. Ne4 White is +0.34 pawns.
Best moves: b3: +0.06 Ne4: 0



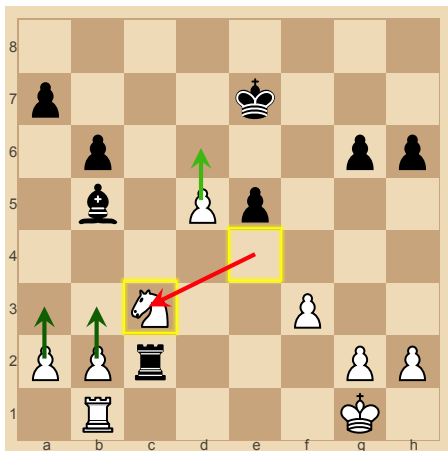
38. ...Ke7 Black is -0.12 pawns.
Best moves: Ke7: 0 Kg7: -0.29



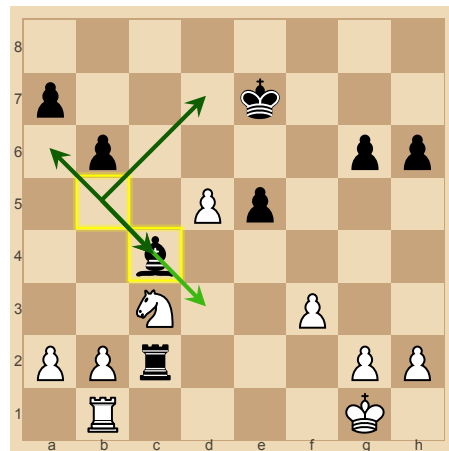
39. Rb1 White is +0.08 pawns.
Best moves: b4: +0.2 b3: +0.19
 Rb1: 0 Nc3: -0.08



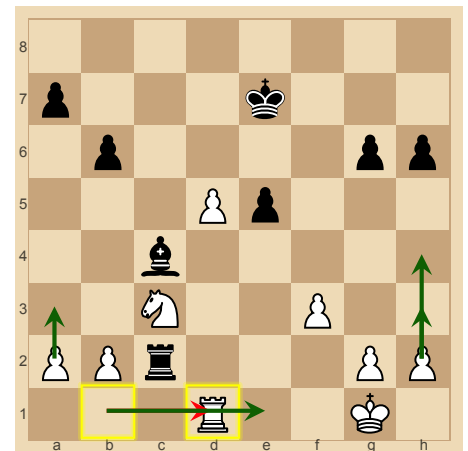
39. ...Bb5 Black is -0.16 pawns.
Best moves: Bc8: +0.35
 Bf5: +0.16 g5: +0.06



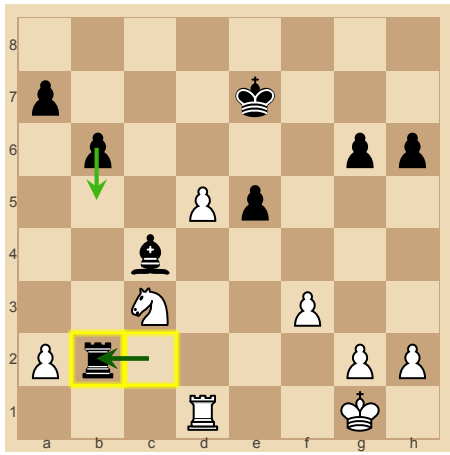
40. Nc3 White is -0.39 pawns.
Best moves: b3: +0.59
 a3: +0.52 d6: +0.39



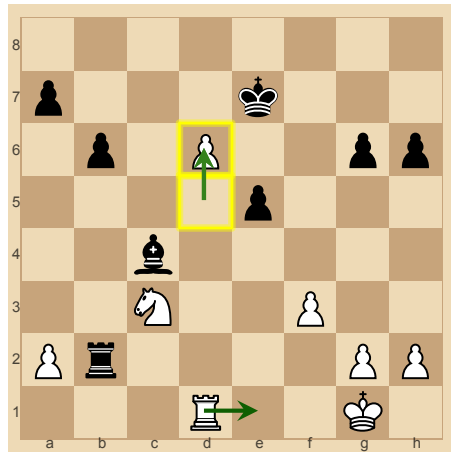
40. ...Bc4 Black is +0.05 pawns.
Best moves: Bc4: 0 Ba6: -0.05
 Bd7: -0.05 Bd3: -0.25



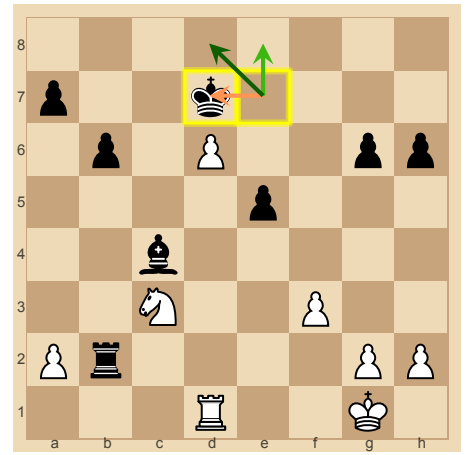
41. Rd1 White is -0.64 pawns.
Best moves: a3: +0.64
 h4: +0.64 Re1: +0.64 h3: +0.62



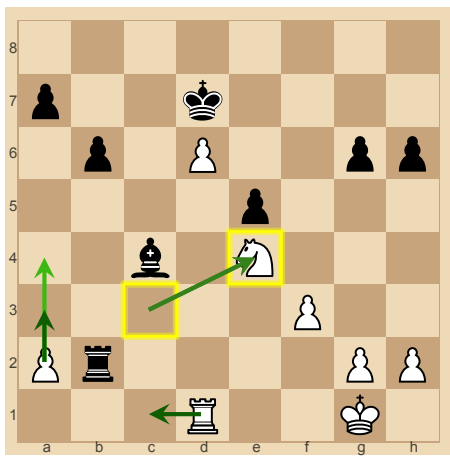
41. ...Rxb2 Black is +0.54 pawns.
Best moves: Rxb2: 0 b5: -0.22



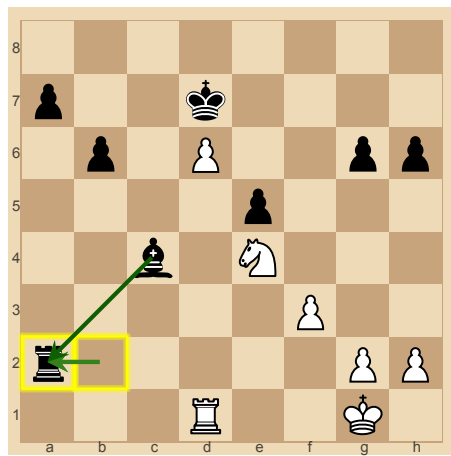
42. d6 White is -0.66 pawns.
Best moves: Re1: +0.14 d6: 0



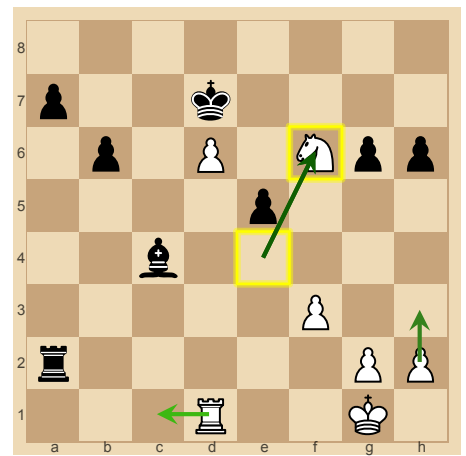
42. ...Kd7 Black is +0.4 pawns.
Best moves: Kd8: +0.42 Ke8: +0.13



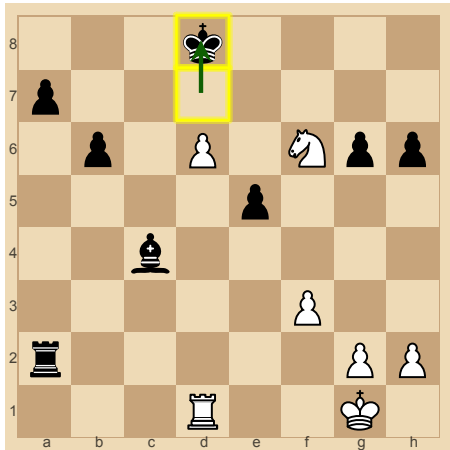
43. Ne4 White is -0.97 pawns.
Best moves: Rc1: +0.12 a3: +0.06 Ne4: 0 a4: -0.1



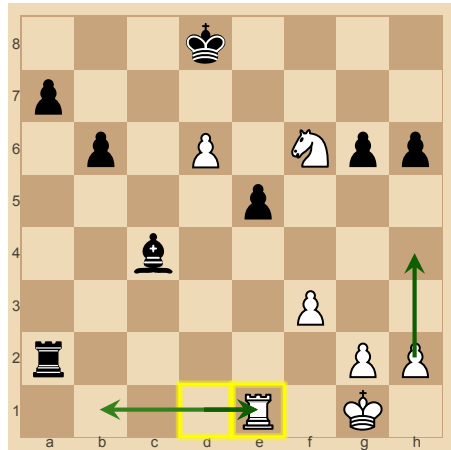
43. ...Rxa2 Black is +0.57 pawns.
Best moves: Bxa2: +0.18 Rxa2: 0



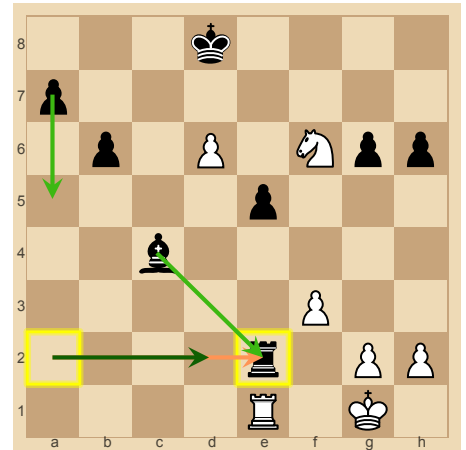
44. Nf6 White is -1.06 pawns.
Best moves: Nf6: 0 h3: -0.15 Rc1: -0.22



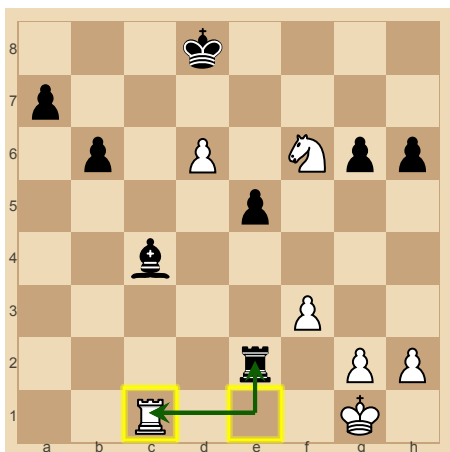
44. ...Kd8 Black is +1.08 pawns.
Best moves: Kd8: 0



45. Re1 White is -1.02 pawns.
Best moves: Re1: 0 h4: -0.07 Rb1: -0.18



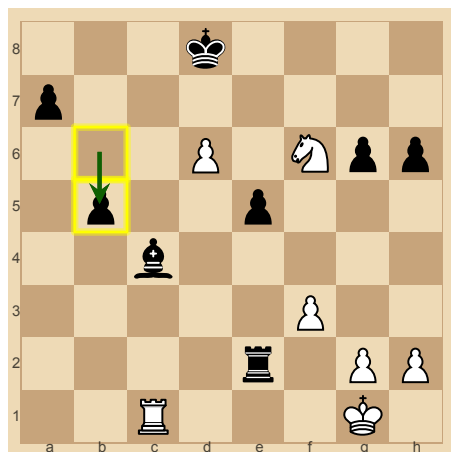
45. ...Re2 Black is +0.64 pawns.
Best moves: Rd2: +0.33 Be2: +0.13 a5: +0.06



46. Rc1 White is -1.04 pawns.

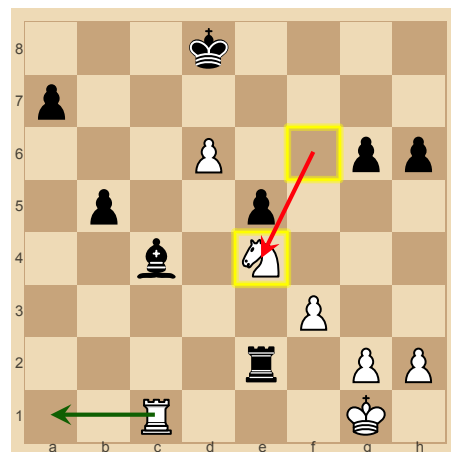
Best moves: Rxe2: +0.02

Rc1: 0



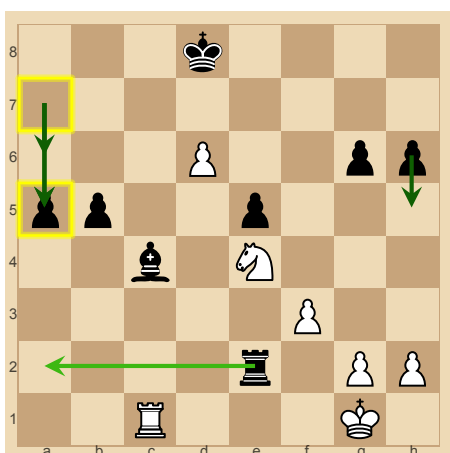
46. ...b5 Black is +1.11 pawns.

Best moves: b5: 0



47. Ne4 White is -1.8 pawns.

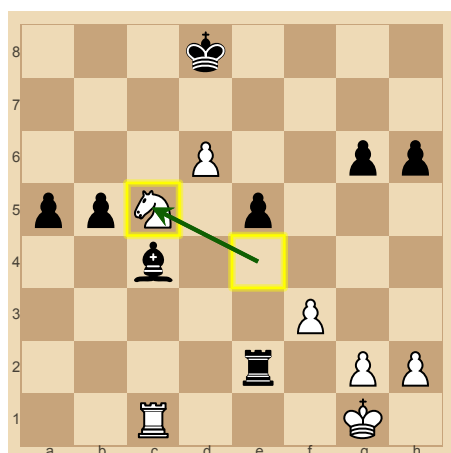
Best moves: Ra1: +0.65



47. ...a5 Black is +1.04 pawns.

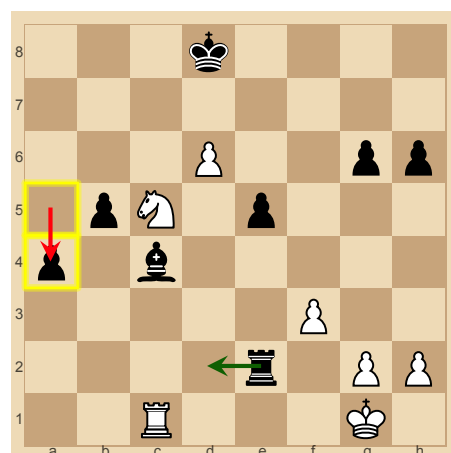
Best moves: a5: 0 a6: -0.02

h5: -0.05 Ra2: -0.24



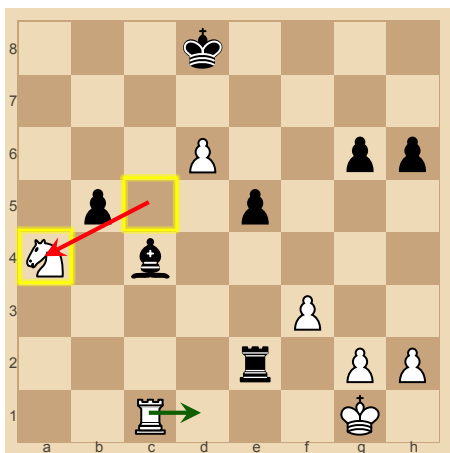
48. Nc5 White is -0.99 pawns.

Best moves: Nc5: 0



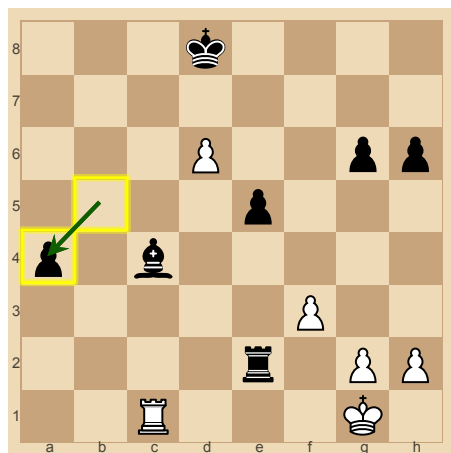
48. ...a4 Both sides are even.

Best moves: Rd2: +1.25



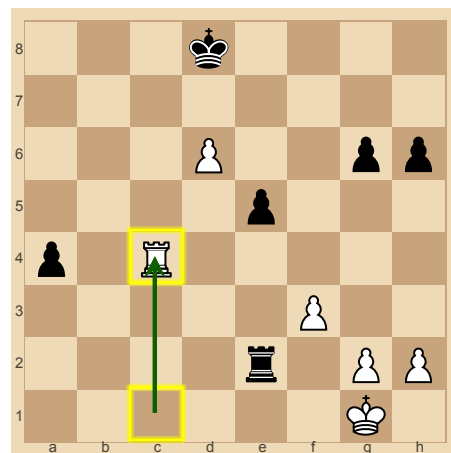
49. Nxa4 White is -3.29 pawns.

Best moves: Rd1: +3.29



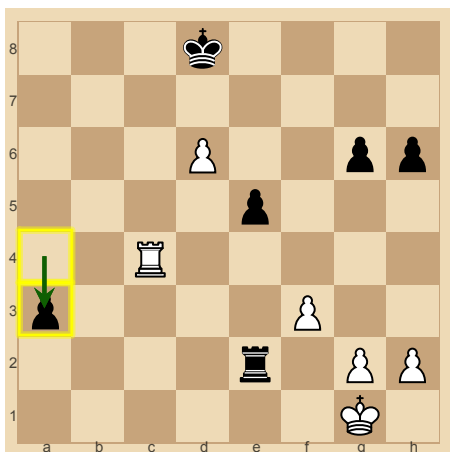
49. ...bxa4 Black is +3.36 pawns.

Best moves: bxa4: 0

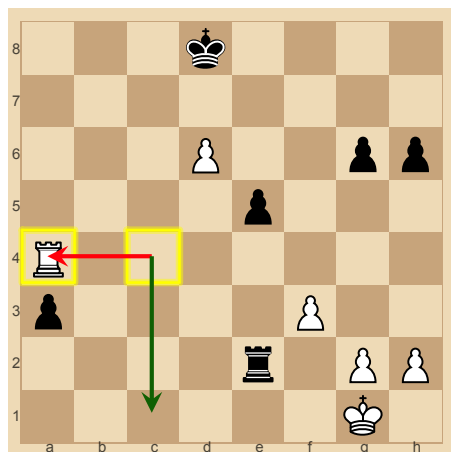


50. Rxc4 White is -3.58 pawns.

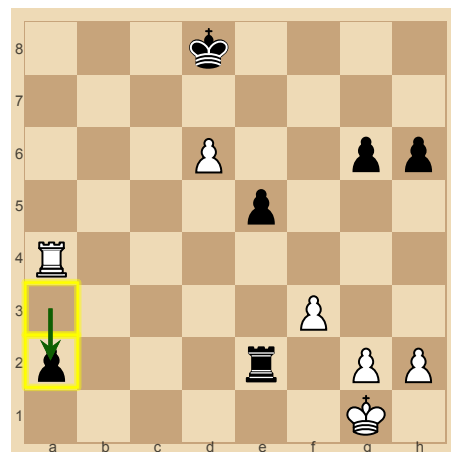
Best moves: Rxc4: 0



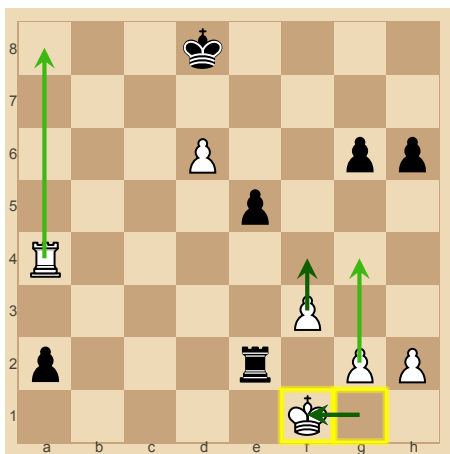
50. ...a3 Black is +3.39 pawns.
Best moves: a3: 0



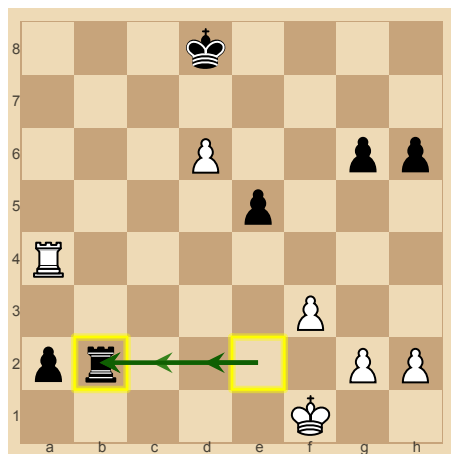
51. Ra4 White is -5.52 pawns.
Best moves: Rc1: +1.57



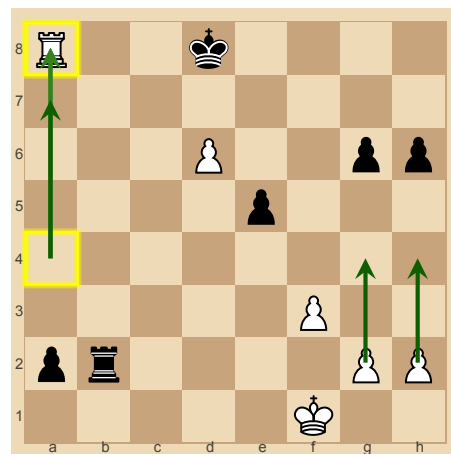
51. ...a2 Black is +5.52 pawns.
Best moves: a2: 0



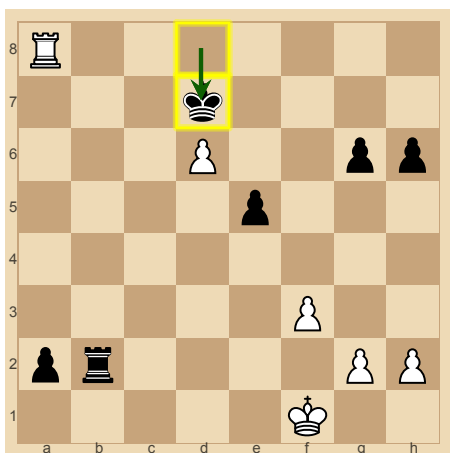
52. Kf1 White is -5.66 pawns.
Best moves: f4: +0.02 Kf1: 0
 Ra8: -0.19 g4: -0.24



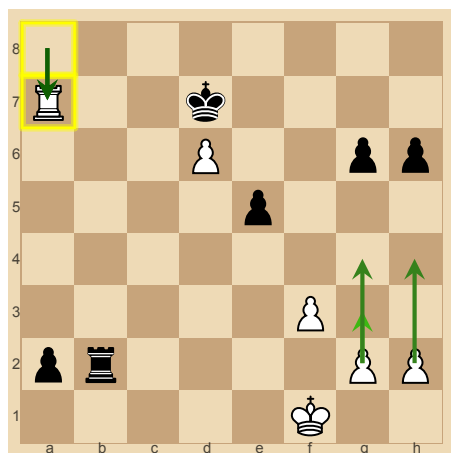
52. ...Rb2 Black is +5.76 pawns.
Best moves: Rd2: +0.01
 Rb2: 0 Rc2: -0.11



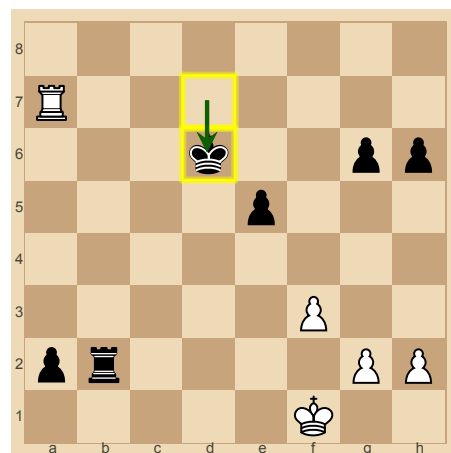
53. Ra8 White is -6.03 pawns.
Best moves: g4: +0.16
 h4: +0.15 Ra7: +0.14 Ra8: 0



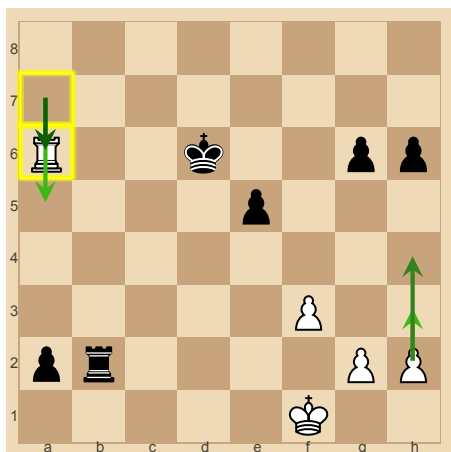
53. ...Kd7 Black is +5.9 pawns.
Best moves: Kd7: 0



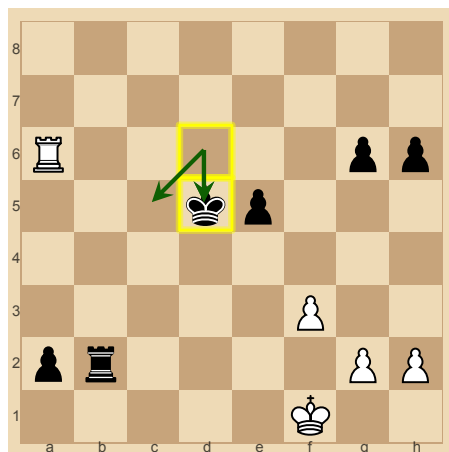
54. Ra7 White is -6.12 pawns.
Best moves: Ra7: 0 h4: -0.1
 g4: -0.1 g3: -0.23



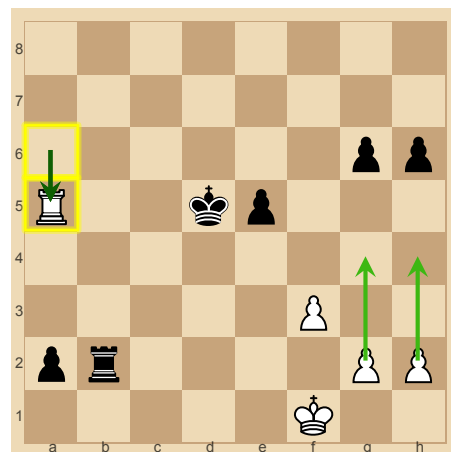
54. ...Kxd6 Black is +5.98 pawns.
Best moves: Kxd6: 0



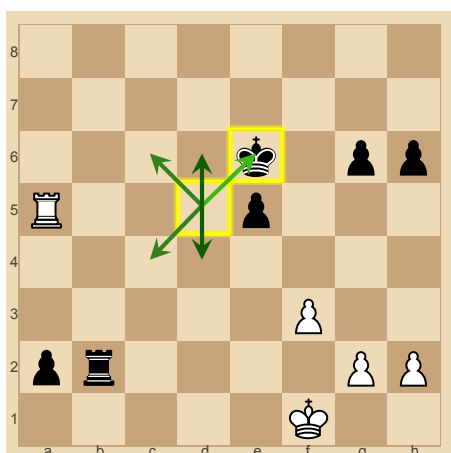
55. Ra6 White is -6.1 pawns.
Best moves: Ra6: 0 h4: -0.15
 h3: -0.2 Ra5: -0.28



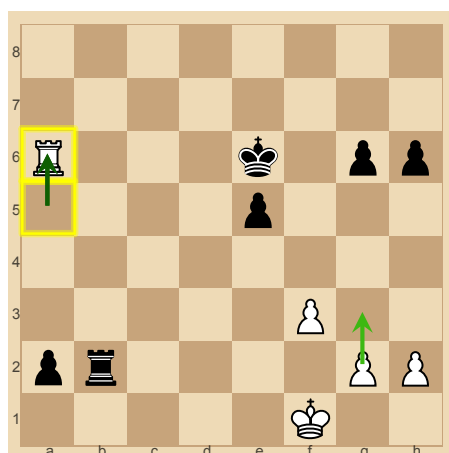
55. ...Kd5 Black is +6.29 pawns.
Best moves: Kc5: +0.02 Kd5: 0



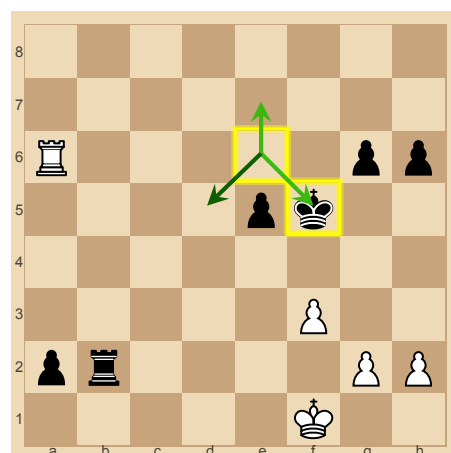
56. Ra5 White is -6.12 pawns.
Best moves: Ra5: 0 h4: -0.25
 g4: -0.29



56. ...Ke6 Black is +5.56 pawns.
Best moves: Kd4: +0.69
 Kd6: +0.63 Kc4: +0.58
 Kc6: +0.56



57. Ra6 White is -6.12 pawns.
Best moves: Ra6: 0 g3: -0.29



57. ...Kf5 Black is +5.98 pawns.
Best moves: Kd5: +0.31
 Ke7: +0.07